

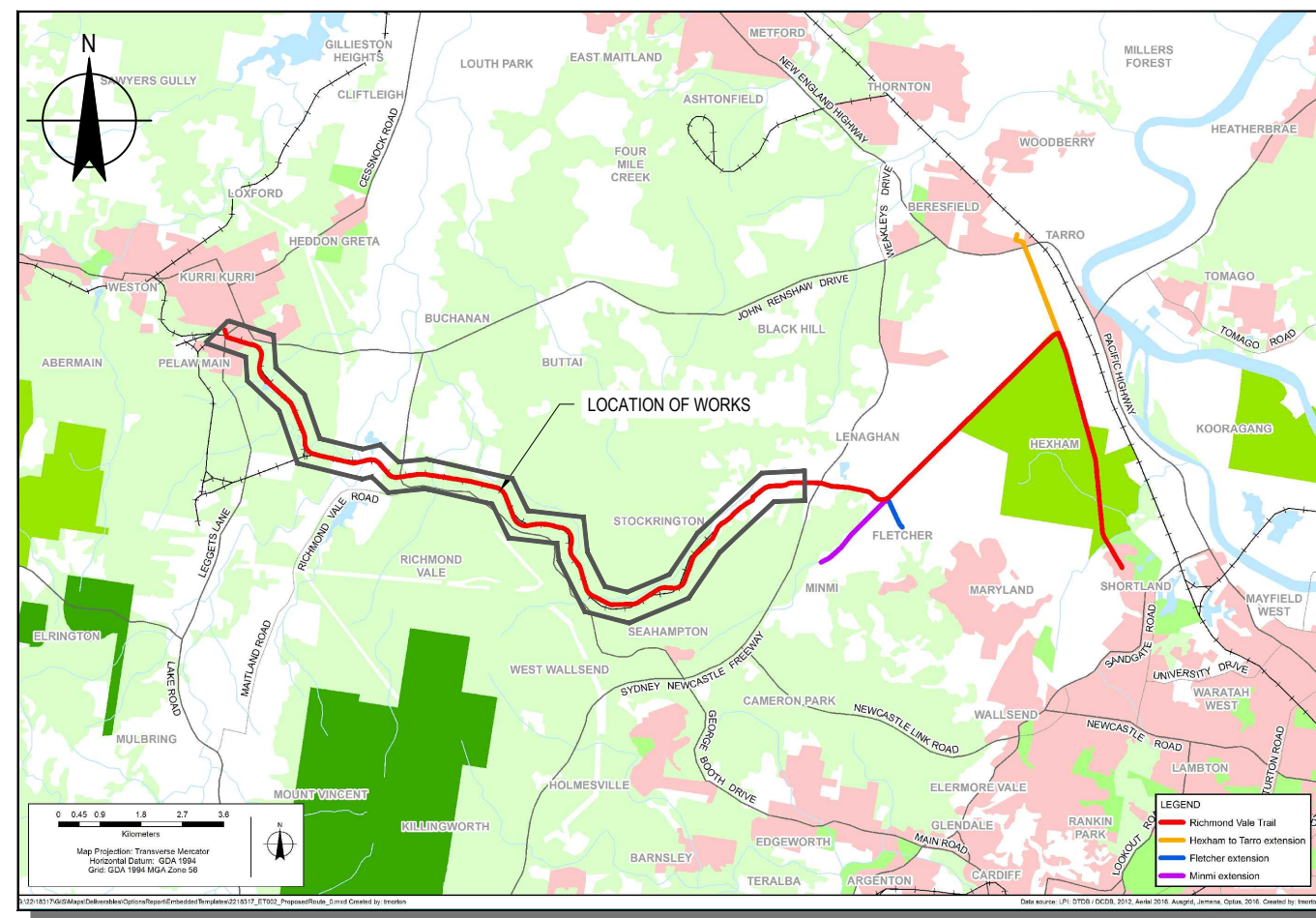
# **Appendix A** – Design Drawings

# CESSNOCK CITY COUNCIL

# RICHMOND VALE RAIL TRAIL

# CONCEPT DESIGN

## 22-12529257



LOCALITY PLAN  
N.T.S

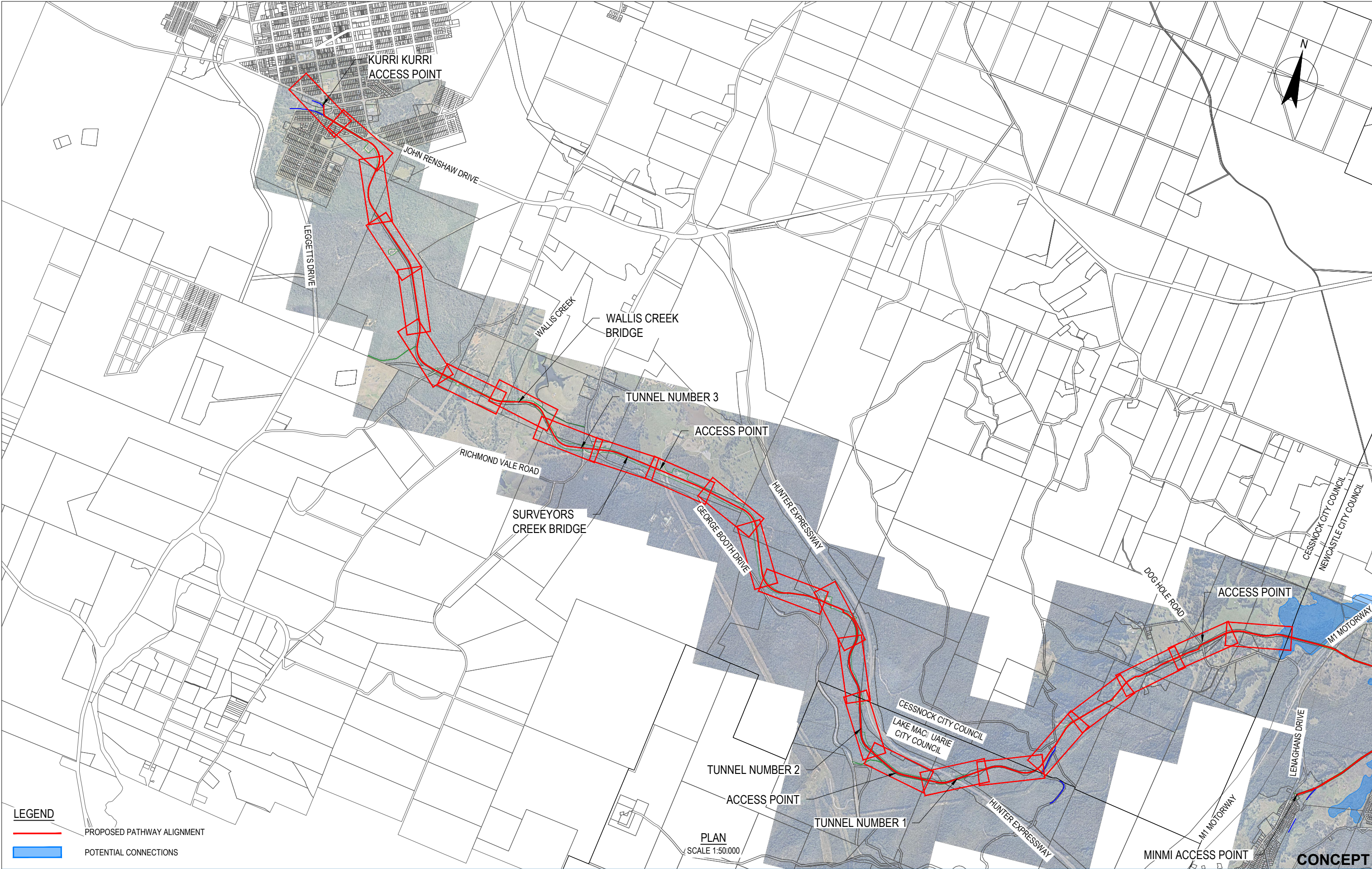
CONCEPT

																																																																																																																																																																																																																																																																																																																																																																																																																																																																																																																																																																																																																																																																																																																																																																																																																																																																																																																																																																																																																																																																																																																																																																																																																																																																																																																																																																																																																																																																																																																																																																																																			</	
--	--	--	--	--	--	--	--	--	--	--	--	--	--	--	--	--	--	--	--	--	--	--	--	--	--	--	--	--	--	--	--	--	--	--	--	--	--	--	--	--	--	--	--	--	--	--	--	--	--	--	--	--	--	--	--	--	--	--	--	--	--	--	--	--	--	--	--	--	--	--	--	--	--	--	--	--	--	--	--	--	--	--	--	--	--	--	--	--	--	--	--	--	--	--	--	--	--	--	--	--	--	--	--	--	--	--	--	--	--	--	--	--	--	--	--	--	--	--	--	--	--	--	--	--	--	--	--	--	--	--	--	--	--	--	--	--	--	--	--	--	--	--	--	--	--	--	--	--	--	--	--	--	--	--	--	--	--	--	--	--	--	--	--	--	--	--	--	--	--	--	--	--	--	--	--	--	--	--	--	--	--	--	--	--	--	--	--	--	--	--	--	--	--	--	--	--	--	--	--	--	--	--	--	--	--	--	--	--	--	--	--	--	--	--	--	--	--	--	--	--	--	--	--	--	--	--	--	--	--	--	--	--	--	--	--	--	--	--	--	--	--	--	--	--	--	--	--	--	--	--	--	--	--	--	--	--	--	--	--	--	--	--	--	--	--	--	--	--	--	--	--	--	--	--	--	--	--	--	--	--	--	--	--	--	--	--	--	--	--	--	--	--	--	--	--	--	--	--	--	--	--	--	--	--	--	--	--	--	--	--	--	--	--	--	--	--	--	--	--	--	--	--	--	--	--	--	--	--	--	--	--	--	--	--	--	--	--	--	--	--	--	--	--	--	--	--	--	--	--	--	--	--	--	--	--	--	--	--	--	--	--	--	--	--	--	--	--	--	--	--	--	--	--	--	--	--	--	--	--	--	--	--	--	--	--	--	--	--	--	--	--	--	--	--	--	--	--	--	--	--	--	--	--	--	--	--	--	--	--	--	--	--	--	--	--	--	--	--	--	--	--	--	--	--	--	--	--	--	--	--	--	--	--	--	--	--	--	--	--	--	--	--	--	--	--	--	--	--	--	--	--	--	--	--	--	--	--	--	--	--	--	--	--	--	--	--	--	--	--	--	--	--	--	--	--	--	--	--	--	--	--	--	--	--	--	--	--	--	--	--	--	--	--	--	--	--	--	--	--	--	--	--	--	--	--	--	--	--	--	--	--	--	--	--	--	--	--	--	--	--	--	--	--	--	--	--	--	--	--	--	--	--	--	--	--	--	--	--	--	--	--	--	--	--	--	--	--	--	--	--	--	--	--	--	--	--	--	--	--	--	--	--	--	--	--	--	--	--	--	--	--	--	--	--	--	--	--	--	--	--	--	--	--	--	--	--	--	--	--	--	--	--	--	--	--	--	--	--	--	--	--	--	--	--	--	--	--	--	--	--	--	--	--	--	--	--	--	--	--	--	--	--	--	--	--	--	--	--	--	--	--	--	--	--	--	--	--	--	--	--	--	--	--	--	--	--	--	--	--	--	--	--	--	--	--	--	--	--	--	--	--	--	--	--	--	--	--	--	--	--	--	--	--	--	--	--	--	--	--	--	--	--	--	--	--	--	--	--	--	--	--	--	--	--	--	--	--	--	--	--	--	--	--	--	--	--	--	--	--	--	--	--	--	--	--	--	--	--	--	--	--	--	--	--	--	--	--	--	--	--	--	--	--	--	--	--	--	--	--	--	--	--	--	--	--	--	--	--	--	--	--	--	--	--	--	--	--	--	--	--	--	--	--	--	--	--	--	--	--	--	--	--	--	--	--	--	--	--	--	--	--	--	--	--	--	--	--	--	--	--	--	--	--	--	--	--	--	--	--	--	--	--	--	--	--	--	--	--	--	--	--	--	--	--	--	--	--	--	--	--	--	--	--	--	--	--	--	--	--	--	--	--	--	--	--	--	--	--	--	--	--	--	--	--	--	--	--	--	--	--	--	--	--	--	--	--	--	--	--	--	--	--	--	--	--	--	--	--	--	--	--	--	--	--	--	--	--	--	--	--	--	--	--	--	--	--	--	--	--	--	--	--	--	--	--	--	--	--	--	--	--	--	--	--	--	--	--	--	--	--	--	--	--	--	--	--	--	--	--	--	--	--	--	--	--	--	--	--	--	--	--	--	--	--	--	--	--	--	--	--	--	--	--	--	--	--	--	--	--	--	--	--	--	--	--	--	--	--	--	--	--	--	--	--	--	--	--	--	--	--	--	--	--	--	--	--	--	--	--	--	--	--	--	--	--	--	--	--	--	--	--	--	--	--	--	--	--	--	--	--	--	--	--	--	--	--	--	--	--	--	--	--	--	--	--	--	--	--	--	--	--	--	--	--	--	--	--	--	--	--	--	--	--	--	--	--	--	--	--	--	--	--	--	--	--	--	--	--	--	--	--	--	--	--	--	--	--	--	--	--	--	--	--	--	--	--	--	--	--	--	--	--	--	--	--	--	--	--	--	--	--	--	--	--	--	--	--	--	--	--	--	--	--	--	--	--	--	--	--	--	--	--	--	--	--	--	--	--	--	--	--	--	--	--	--	--	--	--	--	--	--	--	--	--	--	--	--	--	--	--	--	--	--	--	--	--	--	--	--	--	--	--	--	--	--	--	--	--	--	--	--	--	--	--	--	--	--	--	--	--	--	--	--	--	--	--	--	--	--	--	--	--	--	--	--	--	--	--	--	--	--	--	--	--	--	--	--	--	--	--	--	--	--	--	--	--	--	--	--	--	--	--	--	--	--	--	--	--	--	--	--	--	--	--	--	--	--	--	--	--	--	--	--	--	--	--	--	--	--	--	--	--	--	--	--	--	--	--	--	--	--	--	--	--	--	--	--	--	--	--	--	--	--	--	--	--	--	--	--	--	--	--	--	--	--	--	--	--	--	--	--	--	--	--	--	--	--	--	--	--	--	--	--	--	--	--	--	--	--	--	--	--	--	--	--	--	--	--	--	--	--	--	--	--	--	--	--	--	--	--	--	--	--	--	--	--	--	--	--	--	--	--	--	--	--	--	--	--	--	--	--	--	--	--	--	--	--	--	--	--	--	--	--	--	--	--	--	--	--	--	--	--	--	--	--	--	--	--	--	--	--	--	--	--	--	--	--	--	--	--	--	--	--	--	--	--	--	--	--	--	--	--	--	--	--	--	--	--	--	--	--	--	--	--	--	--	--	--	--	--	--	--	--	--	--	--	--	--	--	--	--	--	--	--	--	--	--	--	--	--	--	--	--	--	--	--	--	--	--	--	--	--	--	--	--	--	--	--	--	--	--	--	--	--	--	--	--	--	--	--	--	--	--	--	--	--	--	--	--	--	--	--	--	--	--	--	--	--	--	--	--	--	--	--	--	--	--	--	--	--	--	--	--	--	--	--	--	--	--	--	--	--	--	--	--	--	--	--	--	--	--	--	--	--	--	--	--	--	--	--	--	--	--	--	--	--	--	--	--	--	--	--	--	--	--	--	--	--	--	--	--	--	--	--	--	--	--	--	----	--









**LEGEND**

PROPOSED PATHWAY ALIGNMENT

POTENTIAL CONNECTIONS

A	CONCEPT ISSUE	B.S.	K.R.	P.Y.	19.06.20
No	Revision	Note: * indicates signatures on original issue of drawing or last revision of drawing	Drawn	Job Manager	Project Director
					Date



**GHD**

GHD Tower, Level 3  
24 Honeysuckle Drive, Newcastle NSW 2300 Australia  
PO Box 5403 Hunter Rgn Mail Cent, NSW 2310  
T 61 2 4979 9999 F 61 2 4979 9988  
E ntlmail@ghd.com W www.ghd.com

**DO NOT SCALE**

Conditions of Use.  
This document may only be used by GHD's client (and any other person who GHD has agreed can use this document) for the purpose for which it was prepared and must not be used by any other person or for any other purpose.

Drawn	B. STANKEWYCZ	Designer	L.SCHNEIDER
Drafting Check		Design Check	K. ROWE
Approved (Project Director)			
Date			
Scale	AS SHOWN		This Drawing must not be used for Construction unless signed as Approved

Client	<b>CESSNOCK CITY COUNCIL</b>
Project	<b>RICHMOND VALE RAIL TRAIL</b>
Title	<b>GENERAL ARRANGEMENT</b>
Original Size	A3
Drawing No:	<b>12529257-C1003</b>
Rev:	<b>A</b>



LEGEND

PAVEMENT

<div></div>	ASPHALT PAVEMENT
<div></div>	CONCRETE PAVEMENT
<div></div>	BRIDGE/ELEVATED STRUCTURE
<div></div>	BOARDWALK STRUCTURE
<div></div>	FLEXIBLE ROAD PAVEMENT
<div></div>	TUNNEL
<div></div>	TYPE F BARRIER
<div></div>	RETAINING WALL

BATTER TREATMENTS

REFER TO GEOTECHNICAL REPORT FOR DESCRIPTION OF BATTER TREATMENTS

<div></div>	TREATMENT REQUIRED
<div></div>	TREATMENT TO BE DETERMINED
<div></div>	NO TREATMENT REQUIRED

FENCING

<div></div>	RURAL STYLE FENCE
<div></div>	STEEL POST AND CABLE FENCE
<div></div>	CYCLE WAY FENCE
<div></div>	SECURITY FENCE
<div></div>	3m HIGH VISUAL SCREEN WALL
<div></div>	NATIVE VEGETATION SCREEN
<div></div>	STEEL GATE

DRAINAGE

<div></div>	SURFACE DRAIN
-------------	---------------

REST AREAS

<div></div>	SHELTERED REST AREA
<div></div>	OPEN REST AREA

EXISTING UTILITES

<div></div>	HV	HIGH VOLTAGE ELECTRICAL OVERHEAD
<div></div>	HV	HIGH VOLTAGE ELECTRICAL UNDERGROUND
<div></div>	LV	LOW VOLTAGE ELECTRICAL OVERHEAD
<div></div>	LV	LOW VOLTAGE ELECTRICAL UNDERGROUND
<div></div>	E(OH)	OVER HEAD ELECTRICAL
<div></div>		AUXILIARY ELECTRICAL OVERHEAD
<div></div>		AUXILIARY ELECTRICAL UNDERGROUND
<div></div>		STREET LIGHT PEC CONTROL, STREETLIGHT, STREETLIGHT STAND
<div></div>		ELECTRICAL SUPPLY POINT
<div></div>		STAY WIRE
<div></div>		ELECTRICAL POLE
<div></div>		ELECTRICAL EARTH POINT
<div></div>		LOW VOLTAGE SUB POLE
<div></div>		ELECTRICAL PILLAR, SWITCH
<div></div>	FO	OPTUS FIBRE OPTIC TELECOMMUNICATIONS UNDERGROUND WITH CABLE MARKER
<div></div>	G	JEMENA HIGH PRESSURE GAS MAIN
<div></div>	T	TELSTRA NETWORK TELECOMMUNICATIONS
<div></div>		TELSTRA CONNECTION POINT AND NODE
<div></div>		TELSTRA PIT, PILLAR
<div></div>	W	WATER MAIN
<div></div>	S	SEWER MAIN

GENERAL NOTES

1. THESE DRAWINGS SHALL BE READ IN CONJUNCTION WITH THE SPECIFICATION AND WITH SUCH OTHER WRITTEN INSTRUCTIONS THAT SHALL BE ISSUED DURING THE COURSE OF CONSTRUCTION. ANY DISCREPANCY OR VARIATION SHALL BE REFERRED TO THE SUPERINTENDENT BEFORE PROCEEDING WITH WORK.
2. THE DRAWINGS ARE A DIAGRAMMATIC REPRESENTATION OF THE WORK TO BE CARRIED OUT ONLY AND DIMENSIONS SHALL NOT BE OBTAINED BY SCALING.
3. ALL LEVELS SHALL BE OBTAINED FROM ESTABLISHED BENCHMARKS ONLY. DATUM FOR ALL DRAWINGS IS AUSTRALIAN HEIGHT DATUM (AHD). THE CONTRACTOR SHALL SETOUT ALL WORKS FROM THE NOMINATED BENCH MARKS.
4. BEFORE ANY OF THE GIVEN SURVEY MARKS ON THE BASE LINES OR THE VARIOUS CONTROL LINES ARE AFFECTED BY THE WORKS, THE CONTRACTOR SHALL TRANSFER SUCH SURVEY MARKS TO SIDE POSITIONS CLEAR OF OPERATIONS AND SHALL NOTE, AND INFORM THE SUPERINTENDENT IN WRITING, OF THE EXTENT OF SUCH MOVEMENT.
5. THE CONTRACTOR SHALL GIVE THE SUPERINTENDENT NOT LESS THAN TWO FULL WORKING DAYS' NOTICE OF THE INTENTION TO PERFORM ANY PORTION OF THE RELOCATION OF SURVEY CONTROL, ESTABLISHMENT OF RECOVERY PEGS, OR SETTING OUT OR LEVELLING, SO THAT SUITABLE ARRANGEMENTS CAN BE MADE FOR CHECKING OF THE WORK BY THE SUPERINTENDENT. IF NO SUCH NOTIFICATION IS GIVEN AND A CONTROL MARK IS DISTURBED OR DESTROYED, THEN THE COST OF RE-ESTABLISHING THE CONTROL SHALL BE BORNE BY THE CONTRACTOR.
6. ALL PEGS AND PROFILES PLACED BY THE CONTRACTOR SHALL BE REMOVED ON COMPLETION OF WORK UNLESS OTHERWISE DIRECTED BY THE SUPERINTENDENT.
7. ALL WORKS SHALL BE DONE IN ACCORDANCE WITH THE FOLLOWING, AND IN ORDER OF DECREASING PRECEDENCE  
(I) THESE DRAWINGS  
(II) THE STANDARDS AND REQUIREMENTS OF THE LOCAL COUNCIL  
(III) AUS-SPEC SPECIFICATION C123 - EARTHWORKS
8. THE PRINCIPAL WILL NOT BE RESPONSIBLE FOR THE SAFE-KEEPING OF ANY OF THE CONTRACTOR'S PLANT, EQUIPMENT, TOOLS, MATERIALS OR OTHER PROPERTY. THE CONTRACTOR MAY PROVIDE, AND PAY FOR, ANY SECURITY FENCING CONSIDERED NECESSARY AROUND ANY OFFICE, WORKSHOP OR STORAGE AREA, SUBJECT TO THE SUPERINTENDENT'S APPROVAL.
9. IF EXISTING FENCING IS CUT OR ALTERED BY THE CONTRACTOR, OR IF THERE IS NO EXISTING SITE FENCING, THE CONTRACTOR SHALL PROVIDE AND MAINTAIN TEMPORARY FENCING TO THE SATISFACTION OF THE SUPERINTENDENT DURING THE CONTRACT TO PREVENT UNAUTHORISED ENTRY INTO THE PROPERTY, AND SHALL REINSTATE THE FENCING AND REMOVE TEMPORARY FENCING ON COMPLETION OF THE WORK.
10. CONSTRUCTION WORK CARRIED OUT UNDER THIS CONTRACT ADJACENT TO OR ADJOINING EXISTING WORKS, SHALL MAKE SMOOTH JUNCTIONS WITH THE EXISTING WORK.
11. ALL TREES SHALL BE RETAINED WITHIN THE ALLOTMENTS AND RESERVES UNLESS SHOWN OR DIRECTED OTHERWISE BY THE SUPERINTENDENT. NO CLEARING WORKS SHALL COMMENCE PRIOR TO COUNCIL INSPECTION, WHICH SHALL BE ARRANGED BY THE CONTRACTOR. TREES TO BE REMOVED AS PER DRAWINGS ARE BASED ON GROUND LEVEL LOCATIONS ONLY. WHERE ADDITIONAL TREES ARE TO BE REMOVED, APPROVAL SHALL BE OBTAINED FROM THE SUPERINTENDENT. WHERE DANGEROUS OVERHANGING TREE LIMBS ARE IDENTIFIED ON TREES TO BE RETAINED THE ASSESSMENT AND REMOVAL OF TREE LIMBS SHALL BE UNDERTAKEN BY A QUALIFIED ARBORIST FOLLOWING CONSULTATION WITH THE SUPERINTENDENT.
12. DIVERSION OF WATER AND THE PROTECTION OF WORKS IS THE CONTRACTORS RESPONSIBILITY.
13. THE CONTRACTOR SHALL PROVIDE FOR THE EFFECTUAL DIVERSION OF SURFACE WATER FROM THE WORKS AND PROVIDE AND ENSURE PROPER FLUSHING FOR STORM AND SUBSOIL WATER ACROSS AND BEYOND THE WORKS AT ALL TIMES. THE FLOW OF STORMWATER AND DRAINAGE ALONG EXISTING GUTTERS AND WATER TABLES SHALL NOT BE INTERRUPTED.
14. ALL WORK SHALL BE CARRIED OUT IN SUCH A MANNER AS TO AVOID NUISANCE AND/OR DAMAGE TO THE ENVIRONMENT. THE CONTRACTOR SHALL COMPLY WITH

- THE REQUIREMENTS OF THE COUNCIL APPROVED REF. NO VARIATION IN COSTS OR EXTENSIONS OF TIME WILL BE CONSIDERED DUE TO THESE REQUIREMENTS.
15. THE CONTRACTOR SHALL PLAN AND CARRY OUT THE WORKS TO AVOID EROSION, CONTAMINATION AND SEDIMENTATION OF THE SITE AND ITS SURROUNDINGS.
16. HERBICIDES AND OTHER TOXIC CHEMICALS SHALL NOT BE USED ON THE SITE WITHOUT THE PRIOR WRITTEN APPROVAL OF THE SUPERINTENDENT.
17. THE CONTRACTOR MUST ENSURE SUPERINTENDENT AND/OR COUNCIL APPROVAL OF MATERIALS PRIOR TO DELIVERY TO SITE.
18. CONTRACTOR MUST OBTAIN MOST CURRENT SERVICE UTILITIES DRAWINGS FROM ALL RELEVANT AUTHORITIES.
19. EXPOSE ALL EXISTING SERVICES WITHIN THE SITE IN ENOUGH LOCATIONS TO DETERMINE THEIR POSITIONS AND LEVELS PRIOR TO COMMENCEMENT OF CONSTRUCTION WORK.
20. ALL WASTE OR DEMOLISHED MATERIALS SHALL BE DISPOSED OFF SITE TO A COUNCIL APPROVED SITE. ALL FEES AND CHARGES SHALL BE INCLUDED IN THE CONTRACT SUM.
21. THE CONTRACTOR SHALL SUPPLY THE SUPERINTENDENT WITH FULLY MARKED-UP AND CERTIFIED WORK-AS-EXECUTED DRAWINGS FOR THE WHOLE OF THE CONTRACT PRIOR TO ISSUE OF THE FINAL CERTIFICATE. PRINTS OR REPRODUCIBLES OF THE CONTRACT DRAWINGS WILL BE SUPPLIED BY THE PRINCIPAL FREE OF CHARGE FOR THIS PURPOSE.
22. WORK-AS-EXECUTED DRAWINGS FOR ROADWORKS SHALL SHOW IN RED INK ALL CHANGES TO THE CONTRACT DRAWINGS AND ACTUAL VALUES OF ALL LEVELS SHOWN ON THE DRAWINGS. THE DRAWINGS SHALL BE SIGNED BY A SURVEYOR AND CERTIFIED BY THE CONTRACTOR.

DRAINAGE NOTES

1. ALL STORMWATER PIPES TO BE RUBBER RING JOINTED U.N.O. PIPE TYPE, CLASS AS SHOWN ON DRAWINGS.
2. REINFORCED CONCRETE PIPES (RCP) SHALL COMPLY WITH AS4058.
3. BEDDING AND BACKFILL MATERIAL SHALL COMPLY WITH AS3725. ALL MATERIAL SHALL BE COMPACTED IN LAYERS NOT EXCEEDING 150MM COMPACTED THICKNESS. BED AND HAUNCH ZONES SHALL BE COMPACTED TO 60% RELATIVE COMPACTION (AS1289.5.4.1). SELECT BACKFILL SHALL BE COMPACTED TO 95% RELATIVE COMPACTION (AS1289.5.7.1).

ROADS NOTES

1. TRAFFIC CONTROL PLANS ARE TO BE PREPARED BY THE CONTRACTOR AND APPROVED BY THE SUPERINTENDENT, AND WHERE NECESSARY RMS AND COUNCIL, PRIOR TO IMPLEMENTATION.
2. THE TRAFFIC CONTROL PLAN SHALL BE IMPLEMENTED IN ACCORDANCE WITH AS1742.

SIGNAGE AND LINEMARKING

1. SIGNAGE AND LINEMARKING FOR BICYCLE FACILITIES TO BE APPLIED AS PER AUSTRALIAN STANDARD 1742.9 - 2000. REGULATORY SIGNAGE TO BE IN ACCORDANCE WITH AS1742.2-2009

CONCEPT

A	CONCEPT ISSUE		B.S	K.R	P.Y	19.06.20
No	Revision	Note: * indicates signatures on original issue of drawing or last revision of drawing	Drawn	Job Manager	Project Director	Date

Plot Date: 19 June 2020 - 5:10 PM

Plotted By: Brandon Stankewycz

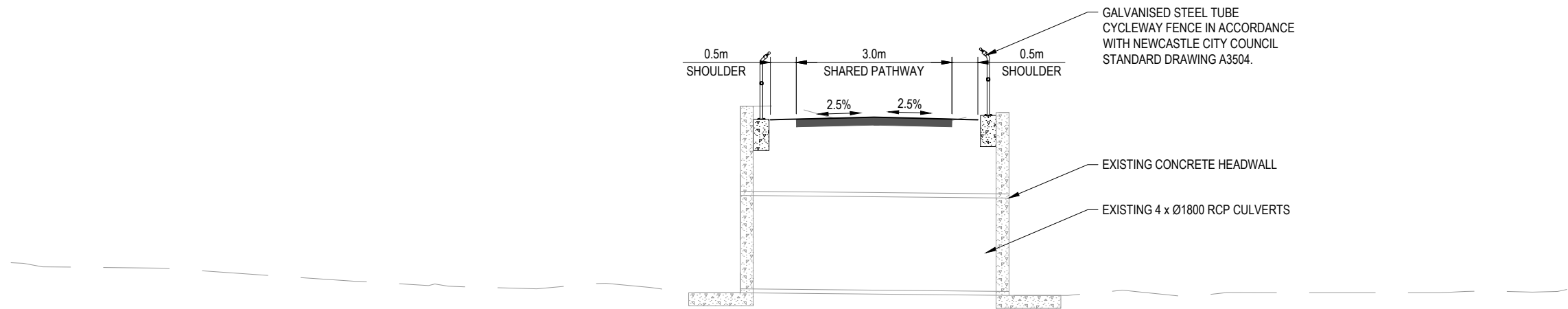
Cad File No: G:\22\12529257\CADD\Drawings\Cessnock REF\12529257-C1004.dwg



DO NOT SCALE	Drawn B. STANKEWYCZ	Designer L.SCHNEIDER
Conditions of Use. This document may only be used by GHD's client (and any other person who GHD has agreed can use this document) for the purpose for which it was prepared and must not be used by any other person or for any other purpose.	Drafting Check	Design Check K. ROWE
	Approved (Project Director) Date	
	Scale AS SHOWN	This Drawing must not be used for Construction unless signed as Approved

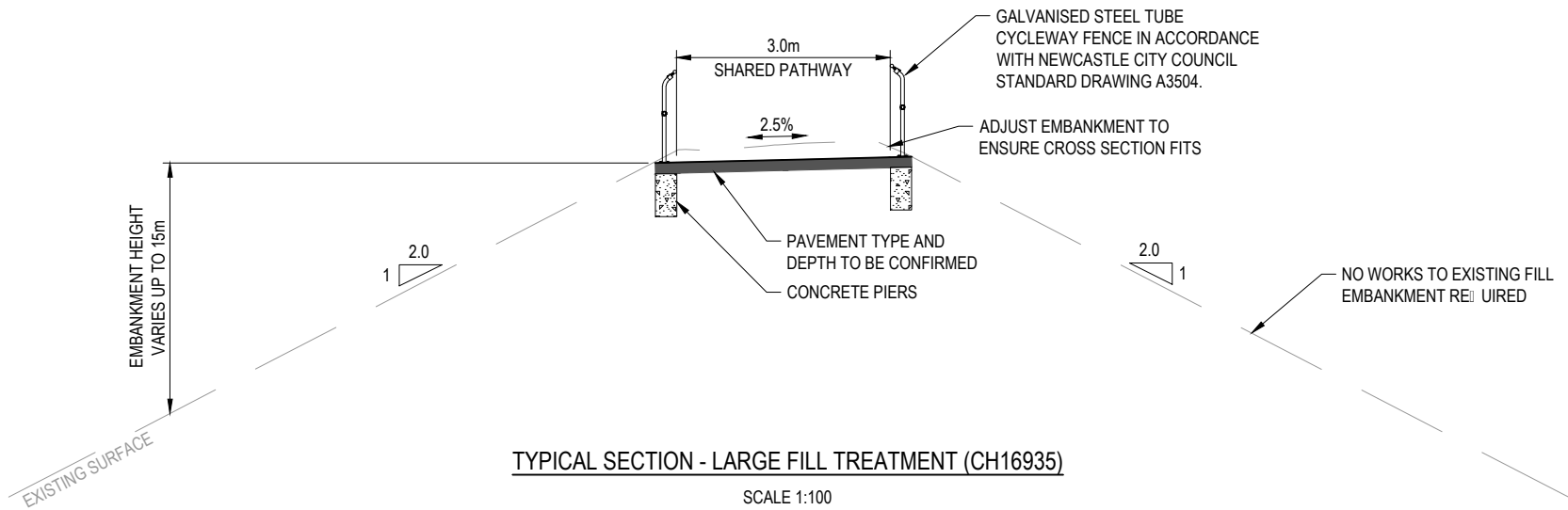
Client	CESSNOCK CITY COUNCIL
Project	RICHMOND VALE RAIL TRAIL
Title	GENERAL NOTES
Original Size	A3
Drawing No:	12529257-C1004
Rev:	A





TYPICAL SECTION - LARGE CULVERT (CH26450)

SCALE 1:100



TYPICAL SECTION - LARGE FILL TREATMENT (CH16935)

SCALE 1:100

CONCEPT

A	CONCEPT ISSUE		B.S	K.R	P.Y	19.06.20
No	Revision	Note: * indicates signatures on original issue of drawing or last revision of drawing	Drawn	Job Manager	Project Director	Date



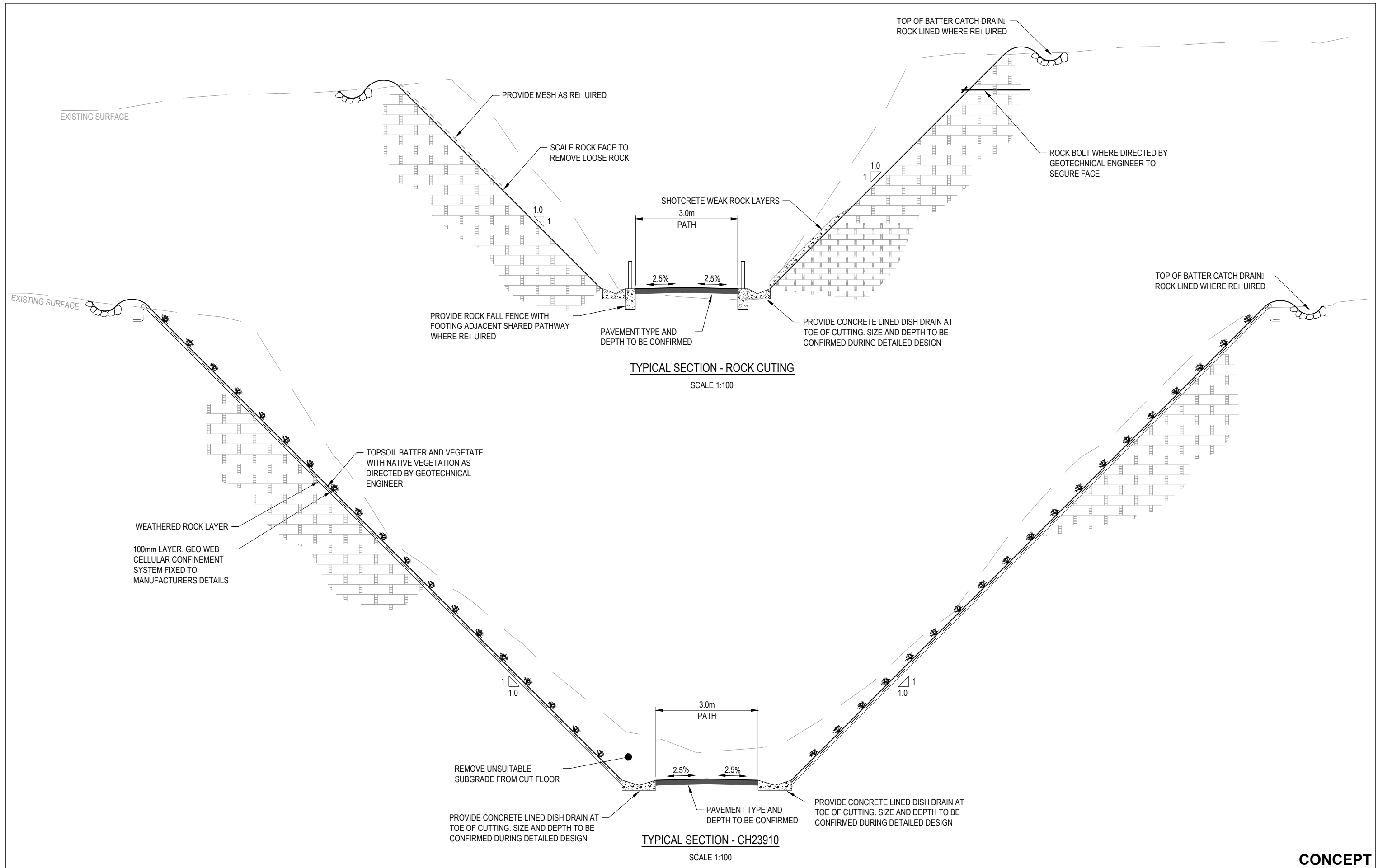
DO NOT SCALE

Conditions of Use.  
This document may only be used by GHD's client (and any other person who GHD has agreed can use this document) for the purpose for which it was prepared and must not be used by any other person or for any other purpose.

Drawn	B. STANKEWYCZ	Designer	L.SCHNEIDER
Drafting Check		Design Check	K. ROWE
Approved (Project Director)			
Date			
Scale	AS SHOWN		This Drawing must not be used for Construction unless signed as Approved

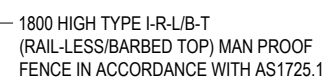
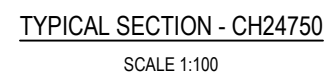
Client	CESSNOCK CITY COUNCIL		
Project	RICHMOND VALE RAIL TRAIL		
Title	TYPICAL SECTIONS		
	SHEET 2 OF 6		
Original Size	A3	Drawing No:	12529257-C1011
		Rev:	A





CONCEPT

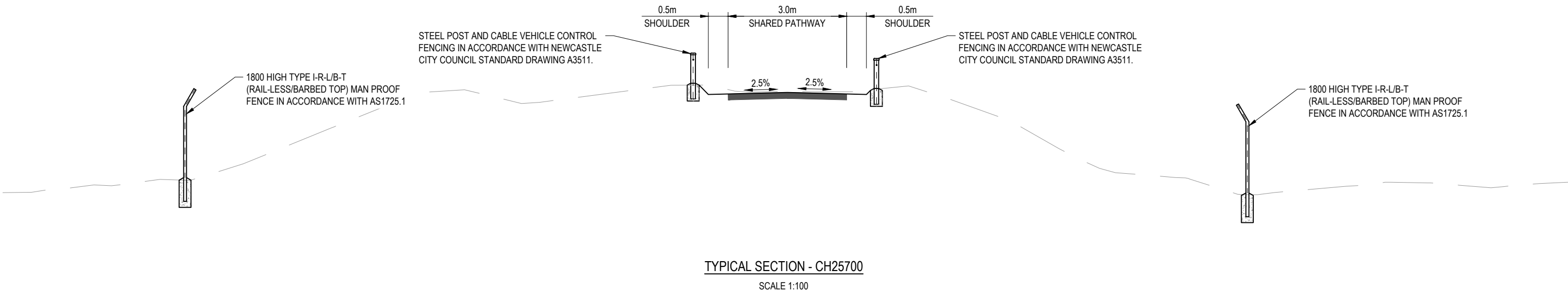
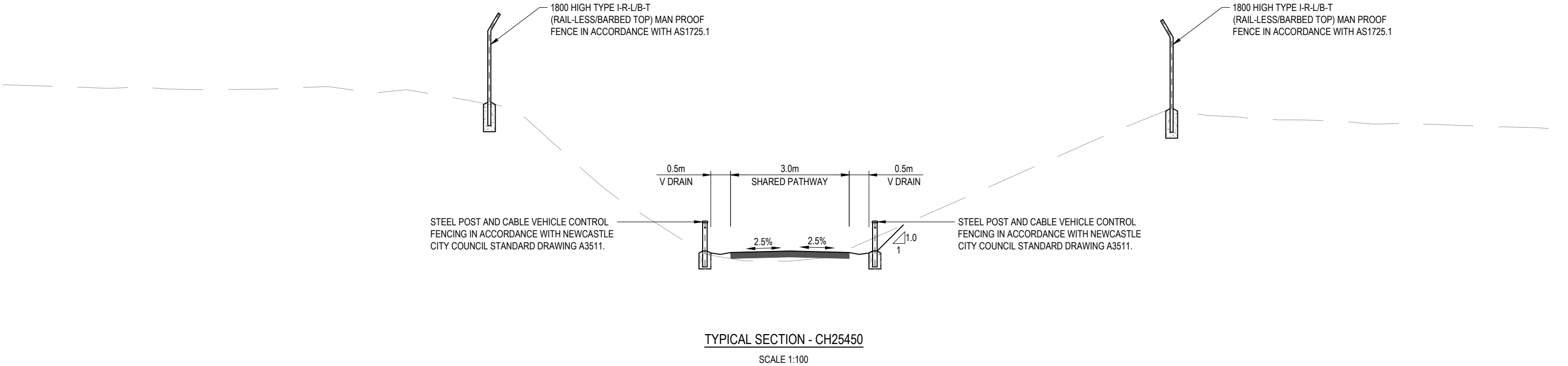
							 SCALE 1:100 AT ORIGINAL SIZE		 CESSNOCK CITY COUNCIL		 GHD GHD Tower, Level 3 24 Honeysuckle Drive, Newcastle NSW 2300 Australia PO Box 5403 Hunter Rgn Mail Cent. NSW 2310 T 61 2 4979 9999 F 61 2 4979 9988 E ntlmail@ghd.com W www.ghd.com		<b>DO NOT SCALE</b>  Conditions of Use. This document may only be used by GHD's client (and any other person who GHD has agreed can use this document) for the purpose for which it was prepared and must not be used by any other person or for any other purpose.		Drawn B. STANKEWYCZ Designer L. SCHNEIDER Drafting Check Design Check K. ROWE Approved (Project Director) Date		Client Project Title Original Size							
A	CONCEPT ISSUE						B.S	K.R	P.Y	19.06.20					Scale AS SHOWN		This Drawing must not be used for Construction unless signed as Approved		A3		Drawing No: 12529257-C1013		Rev: A	
No	Revision	Note: * indicates signatures on original issue of drawing or last revision of drawing					Drawn	Job Manager	Project Director	Date														



TYPICAL SECTION - CH25100  
SCALE 1:100

## CONCEPT

													<b>DO NOT SCALE</b>		Drawn B. STANKEWYCZ Designer L. SCHNEIDER		Client <b>CESSNOCK CITY COUNCIL</b>			
													Conditions of Use. This document may only be used by GHD's client (and any other person who GHD has agreed can use this document) for the purpose for which it was prepared and must not be used by any other person or for any other purpose.		Drafting Check Design Check K. ROWE		Project <b>RICHMOND VALE RAIL TRAIL</b>			
															Approved (Project Director) Date		Title <b>TYPICAL SECTIONS</b>			
A CONCEPT ISSUE							B.S. K.R. P.Y. 19.06.20								Scale AS SHOWN		Original Size <b>A3</b> Drawing No: <b>12529257-C1014</b>		Rev: <b>A</b>	
No	Revision	Note: * indicates signatures on original issue of drawing or last revision of drawing	Drawn	Job Manager	Project Director	Date									This Drawing must not be used for Construction unless signed as Approved					



CONCEPT

A	CONCEPT ISSUE	B.S	K.R	P.Y	19.06.20
No	Revision	Note: * indicates signatures on original issue of drawing or last revision of drawing			
		Drawn	Job Manager	Project Director	Date



GHD Tower, Level 3  
24 Honeysuckle Drive, Newcastle NSW 2300 Australia  
PO Box 5403 Hunter Rgn Mail Cent. NSW 2310  
T 61 2 4979 9999 F 61 2 4979 9988  
E ntlmail@ghd.com W www.ghd.com

DO NOT SCALE		Drawn B. STANKEWYCZ	Designer L.SCHNEIDER	Client	CESSNOCK CITY COUNCIL	
<div>Conditions of Use.</div> <div>This document may only be used by GHD's client (and any other person who GHD has agreed can use this document) for the purpose for which it was prepared and must not be used by any other person or for any other purpose.</div>		Drafting Check	Design Check K. ROWE	Project	RICHMOND VALE RAIL TRAIL	
		Approved (Project Director)		Title	TYPICAL SECTIONS	
		Date			SHEET 6 OF 6	
Scale	AS SHOWN	This Drawing must not be used for Construction unless signed as Approved		Original Size	A3 Drawing No: 12529257-C1015	
					Rev:	A









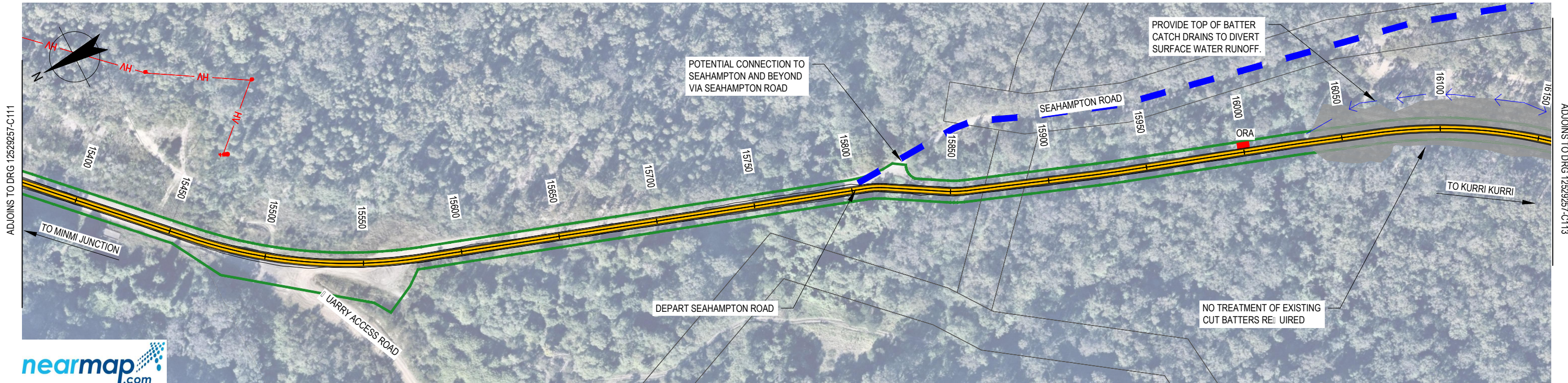












DATUM RL. 8.00

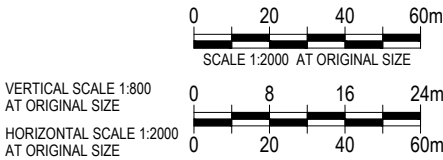
VERTICAL ALIGNMENT	<div><div><div>-L=339.24m- K=10 L=3.23m G=1.23%</div><div>L=248.23m G=1.55%</div><div><div>K=10 L=23.3m</div><div>L=57.75m G=-0.78%</div><div><div>K=10 L=49.7m</div><div>L=11.48m G=4.19%</div><div><div>K=10 L=40.21m</div><div>L=50.65m G=0.17%</div><div><div>K=10 L=12.72m</div><div>L=439.1m G=1.44%</div></div></div></div></div></div></div>																																			
HORIZONTAL ALIGNMENT	<div><div>L=425.58m</div><div><div>L=118.09m R=250.00m</div><div>L=226.13m</div><div><div>L=10.78m R=50.00m</div><div>L=31.00m R=50.00m</div><div><div>L=9.25m R=50.00m</div><div>L=65.79m</div><div><div>L=14.63m R=500.00m</div><div>L=84.42m</div><div><div>L=8.36m R=500.00m</div><div>L=36.32m</div><div>L=319.24m R=245.00m</div></div></div></div></div></div></div>																																			
LEVEL DIFFERENCE CUT - / FILL +	0.05	-0.02	0.01	0.09	0.20	0.20	0.16	0.01	-0.03	-0.06	-0.21	0.03	-0.09	-0.07	0.00	-0.04	0.04	0.01	-0.08	-0.09	0.06	0.01	-0.18	0.06	0.02	-0.00	0.01	-0.02	-0.06	0.06	-0.03	0.13	-0.08	-0.16	-0.12	-0.07
DESIGN SURFACE LEVEL	24.691	24.936	25.215	25.525	25.835	26.145	26.455	26.765	27.075	27.385	27.695	28.004	28.314	28.624	28.934	29.036	28.884	28.728	28.572	28.603	29.035	29.820	30.492	30.766	30.802	30.835	30.896	31.170	31.458	31.746	32.034	32.322	32.610	32.898	33.186	33.474
EXISTING SURFACE LEVEL	24.64	24.96	25.21	25.43	25.63	25.94	26.29	26.76	27.11	27.45	27.91	27.97	28.40	28.69	28.93	29.07	28.85	28.71	28.65	28.69	28.97	29.81	30.67	30.71	30.78	30.84	30.89	31.19	31.52	31.69	32.06	32.19	32.69	33.06	33.30	33.54
CHAINAGE	15400.000	15420.000	15440.000	15460.000	15480.000	15500.000	15520.000	15540.000	15560.000	15580.000	15600.000	15620.000	15640.000	15660.000	15680.000	15700.000	15720.000	15740.000	15760.000	15780.000	15800.000	15820.000	15840.000	15860.000	15880.000	15900.000	15920.000	15940.000	15960.000	15980.000	16000.000	16020.000	16040.000	16060.000	16080.000	16100.000

LONGITUDINAL SECTION - SHORTLAND TO KURRI KURRI

HORIZONTAL SCALE 1:2000  
VERTICAL SCALE 1:800

CONCEPT

A	CONCEPT ISSUE		B.S	K.R	P.Y	19.06.20
No	Revision	Note: * indicates signatures on original issue of drawing or last revision of drawing	Drawn	Job Manager	Project Director	Date



DO NOT SCALE

Conditions of Use.  
This document may only be used by GHD's client (and any other person who GHD has agreed can use this document) for the purpose for which it was prepared and must not be used by any other person or for any other purpose.

Drawn B. STANKEWYCZ  
Designer L. SCHNEIDER  
Drafting Check  
Design Check K. ROWE  
Approved (Project Director)  
Date  
Scale AS SHOWN

This Drawing must not be used for Construction unless signed as Approved

Client CESSNOCK CITY COUNCIL  
Project RICHMOND VALE RAIL TRAIL  
Title SHORTLAND TO KURRI KURRI  
SHEET 23 OF 43

Original Size A3  
Drawing No: 12529257-C1122

Rev: A





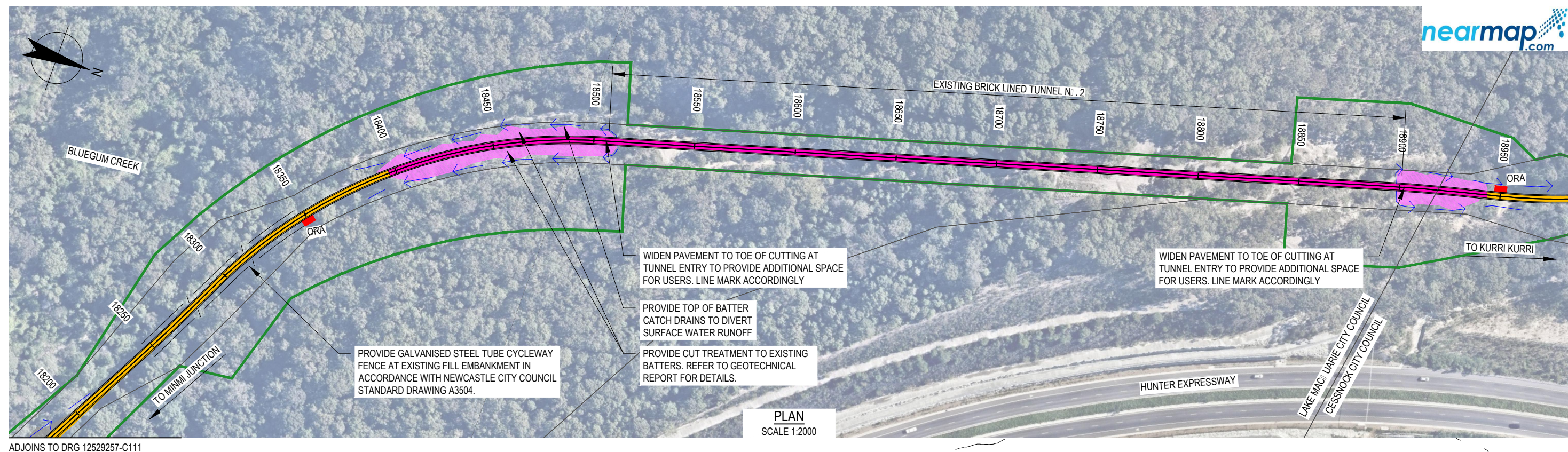




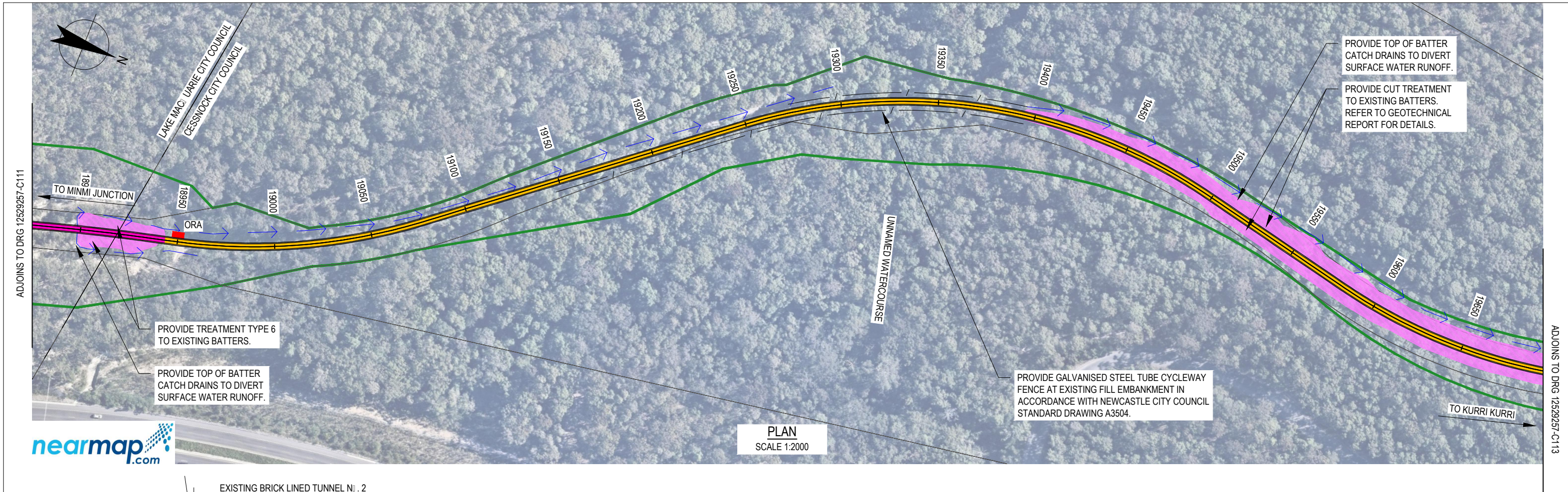












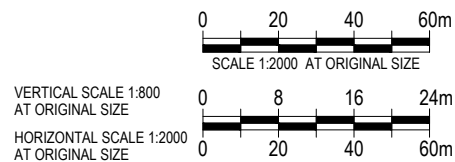
DATUM RL. 43.00

VERTICAL ALIGNMENT	L=424.19m		K=10 L=7.14m		L=1083.54m																															
	G=-0.39%		G=-1.11%																																	
HORIZONTAL ALIGNMENT	L=43.33m R=1000.00m		L=16.43m		L=128.82m R=300.00m								L=171.44m								L=249.16m R=280.00m								L=83.81m				L=398.18m R=280.00m			
LEVEL DIFFERENCE CUT - / FILL +	-12.01	-0.72	-0.25	0.03	0.12	-0.12	-0.04	-0.07	0.05	-0.21	-0.17	-0.13	-0.26	-0.22	-0.16	-0.17	-0.04	0.31	-0.54	0.54	0.38	0.77	0.53	0.58	0.48	0.30	0.31	0.20	0.21	0.09	-0.10	-0.12	0.00	-0.07	-0.25	-0.57
DESIGN SURFACE LEVEL	66.493	66.415	66.336	66.132	65.911	65.690	65.469	65.248	65.027	64.806	64.585	64.364	64.143	63.922	63.701	63.480	63.259	63.038	62.817	62.596	62.375	62.154	61.933	61.712	61.491	61.270	61.049	60.828	60.607	60.386	60.165	59.944	59.723	59.502	59.281	59.060
EXISTING SURFACE LEVEL	78.50	67.13	66.59	66.10	65.79	65.81	65.51	65.32	64.98	65.01	64.76	64.50	64.40	64.14	63.86	63.65	63.30	62.73	63.36	62.06	62.00	61.38	61.41	61.13	61.02	60.97	60.74	60.63	60.40	60.30	60.26	60.07	59.72	59.57	59.54	59.63
CHAINAGE	18900.000	18920.000	18940.000	18960.000	18980.000	19000.000	19020.000	19040.000	19060.000	19080.000	19100.000	19120.000	19140.000	19160.000	19180.000	19200.000	19220.000	19240.000	19260.000	19280.000	19300.000	19320.000	19340.000	19360.000	19380.000	19400.000	19420.000	19440.000	19460.000	19480.000	19500.000	19520.000	19540.000	19560.000	19580.000	19600.000

LONGITUDINAL SECTION - SHORTLAND TO KURRI KURRI

HORIZONTAL SCALE 1:2000  
VERTICAL SCALE 1:800

A	CONCEPT ISSUE		B.S.	K.R	P.Y	19.06.20
No	Revision	Note: * indicates signatures on original issue of drawing or last revision of drawing	Drawn	Job Manager	Project Director	Date



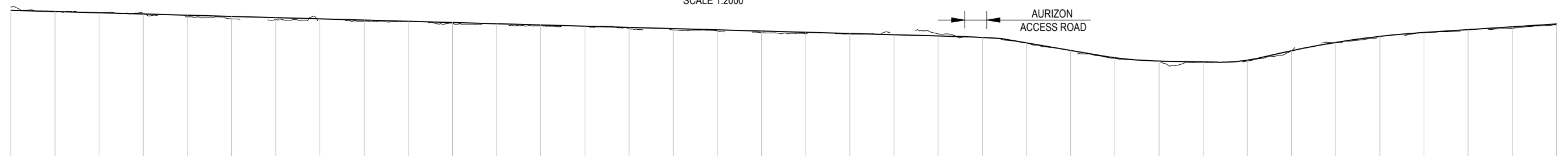
DO NOT SCALE

Conditions of Use.  
This document may only be used by GHD's client (and any other person who GHD has agreed can use this document) for the purpose for which it was prepared and must not be used by any other person or for any other purpose.

Drawn	B. STANKEWYCZ	Designer	L. SCHNEIDER
Drafting Check		Design Check	K. ROWE
Approved (Project Director)		Date	
Scale	AS SHOWN	This Drawing must not be used for Construction unless signed as Approved	

Client	CESSNOCK CITY COUNCIL
Project	RICHMOND VALE RAIL TRAIL
Title	SHORTLAND TO KURRI KURRI
Original Size	A3
Drawing No:	12529257-C1127
Rev:	A





VERTICAL ALIGNMENT																																				
HORIZONTAL ALIGNMENT																																				
LEVEL DIFFERENCE CUT - / FILL +	-0.57	0.04	-0.05	-0.09	0.29	0.43	0.37	0.33	0.20	0.09	0.11	0.37	0.13	0.03	0.21	0.22	0.21	0.31	0.27	0.07	-0.68	-0.37	-0.10	-0.01	0.31	0.15	0.15	0.08	0.18	-0.02	0.07	0.27	0.02	0.18	0.25	0.18
DESIGN SURFACE LEVEL	59.060	58.839	58.618	58.397	58.176	57.955	57.734	57.513	57.292	57.071	56.850	56.629	56.408	56.187	55.966	55.745	55.524	55.303	55.082	54.861	54.640	54.419	54.142	53.151	51.777	50.484	49.868	49.713	50.034	51.733	53.236	54.338	55.041	55.560	56.079	56.597
EXISTING SURFACE LEVEL	59.63	58.80	58.67	58.49	57.89	57.52	57.36	57.18	57.10	56.98	56.74	56.26	56.28	56.16	55.75	55.53	55.31	55.00	54.81	54.79	55.32	54.79	54.25	53.16	51.47	50.34	49.72	49.64	49.86	51.75	53.17	54.07	55.02	55.38	55.82	56.42
CHAINAGE	19600.000	19620.000	19640.000	19660.000	19680.000	19700.000	19720.000	19740.000	19760.000	19780.000	19800.000	19820.000	19840.000	19860.000	19880.000	19900.000	19920.000	19940.000	19960.000	19980.000	20000.000	20020.000	20040.000	20060.000	20080.000	20100.000	20120.000	20140.000	20160.000	20180.000	20200.000	20220.000	20240.000	20260.000	20280.000	20300.000

## CONCEPT

[illegible]







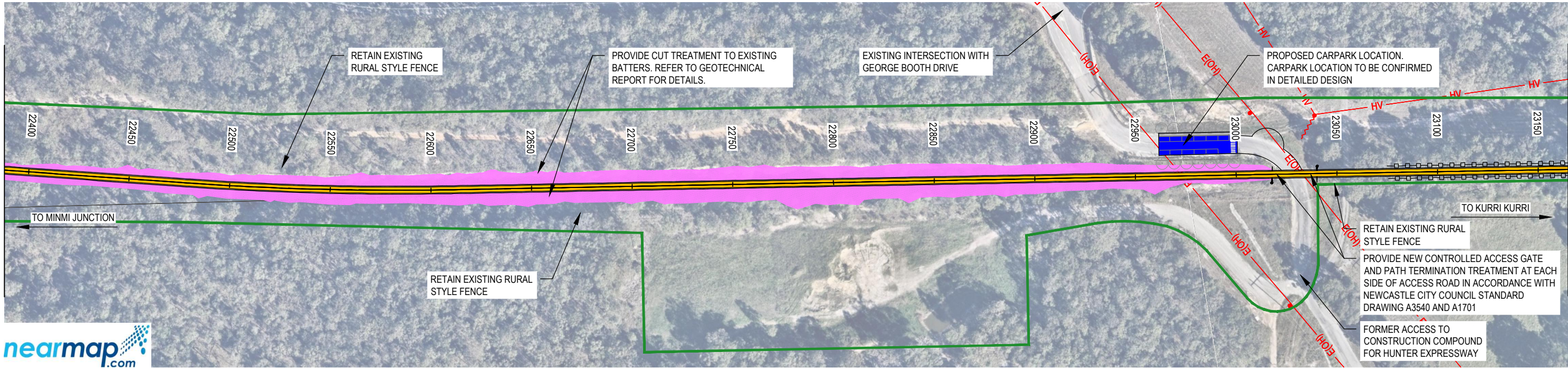






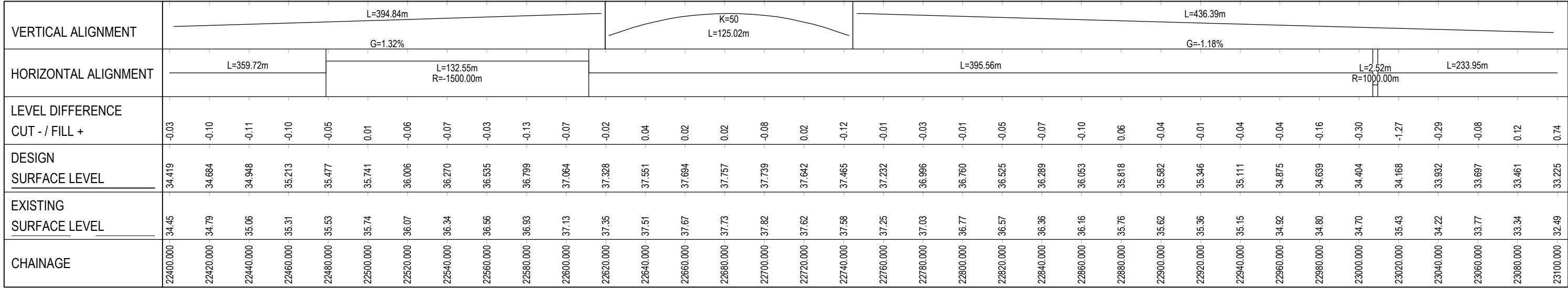


ADJOINS TO DRG 12529257-C112



PLAN  
SCALE 1:2000

DATUM RL. 16.00

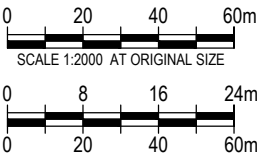


LONGITUDINAL SECTION - SHORTLAND TO KURRI KURRI  
HORIZONTAL SCALE 1:2000  
VERTICAL SCALE 1:800

CONCEPT

A	CONCEPT ISSUE	B.S.	K.R.	P.Y.	19.06.20
No	Revision	Note: * indicates signatures on original issue of drawing or last revision of drawing	Drawn	Job Manager	Project Director

VERTICAL SCALE 1:800  
AT ORIGINAL SIZE  
HORIZONTAL SCALE 1:2000  
AT ORIGINAL SIZE

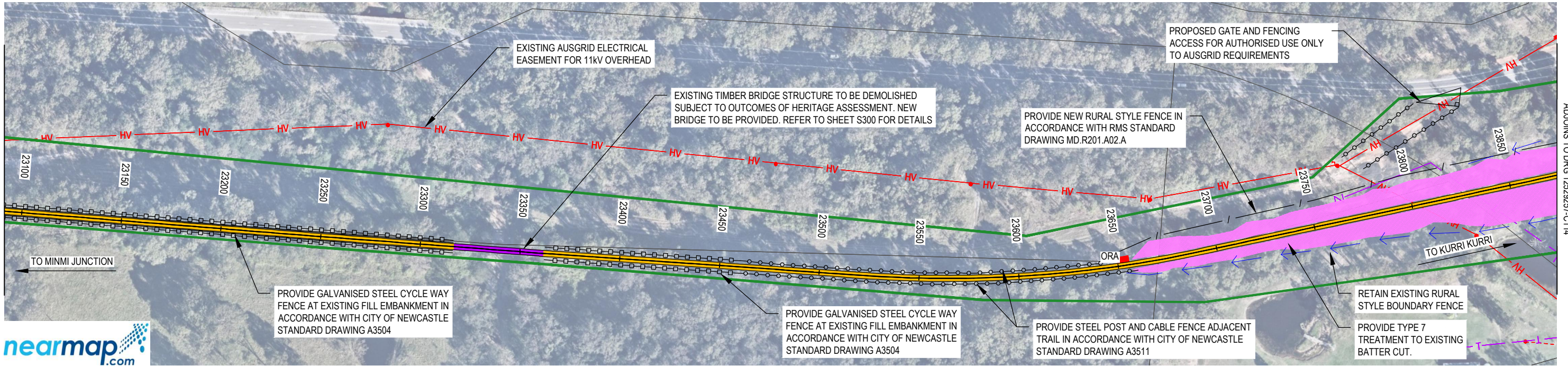


DO NOT SCALE	Drawn B. STANKEWYCZ	Designer L. SCHNEIDER
Conditions of Use. This document may only be used by GHD's client (and any other person who GHD has agreed can use this document) for the purpose for which it was prepared and must not be used by any other person or for any other purpose.	Drafting Check	Design Check K. ROWE
	Approved (Project Director) Date	
	Scale AS SHOWN	This Drawing must not be used for Construction unless signed as Approved

Client	CESSNOCK CITY COUNCIL
Project	RICHMOND VALE RAIL TRAIL
Title	SHORTLAND TO KURRI KURRI
	SHEET 33 OF 43
Original Size	A3
Drawing No:	12529257-C1132
Rev:	A



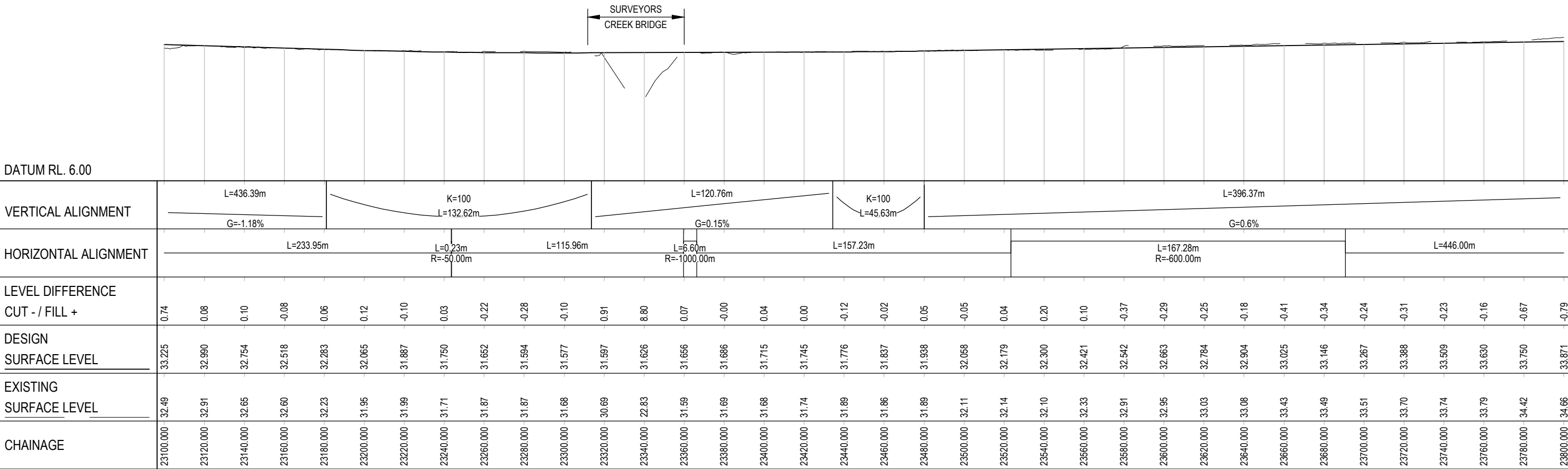
ADJOINS TO DRG 12529257-C112



ADJOINS TO DRG 12529257-C114



PLAN  
SCALE 1:2000

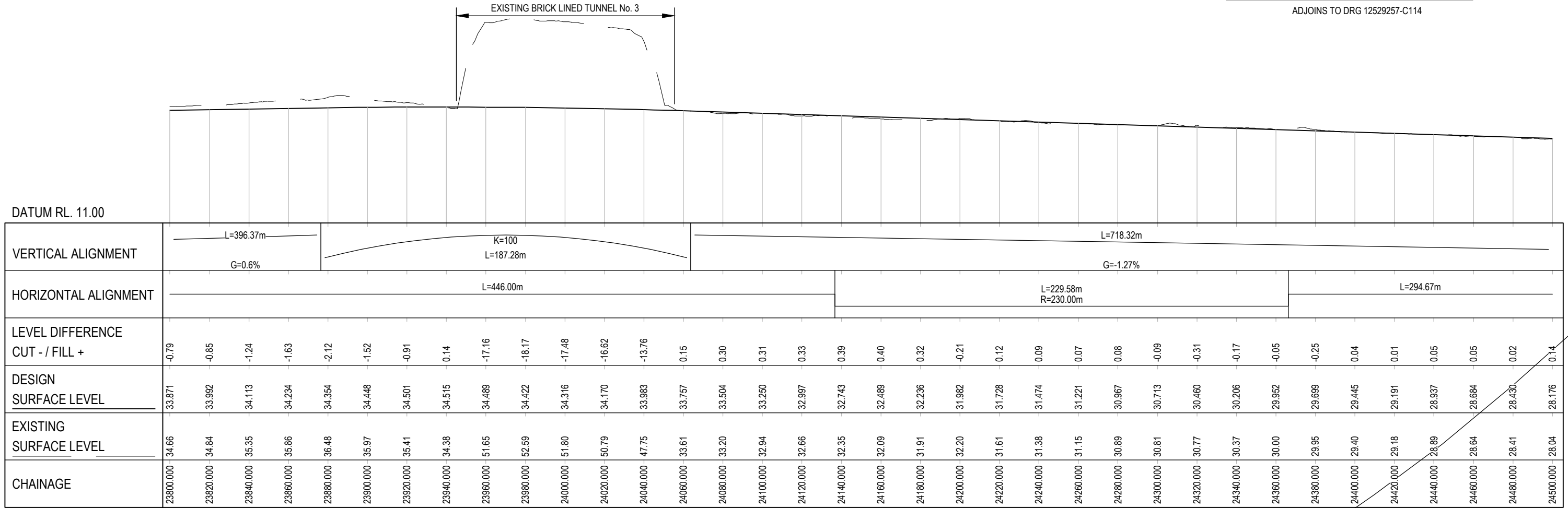
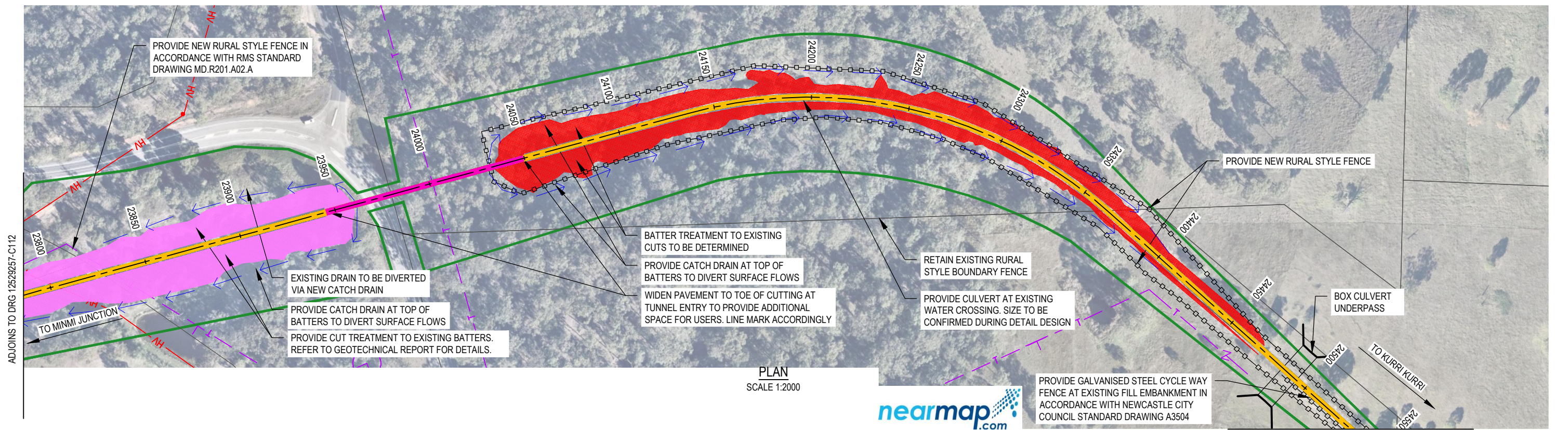


LONGITUDINAL SECTION - SHORTLAND TO KURRI KURRI  
HORIZONTAL SCALE 1:2000  
VERTICAL SCALE 1:800

CONCEPT

												<b>DO NOT SCALE</b> Conditions of Use. This document may only be used by GHD's client (and any other person who GHD has agreed can use this document) for the purpose for which it was prepared and must not be used by any other person or for any other purpose.				Drawn B. STANKEWYCZ Drafting Check Approved (Project Director) Date Scale AS SHOWN		Designer L. SCHNEIDER Design Check K. ROWE This Drawing must not be used for Construction unless signed as Approved		Client <b>CESSNOCK CITY COUNCIL</b> Project <b>RICHMOND VALE RAIL TRAIL</b> Title <b>SHORTLAND TO KURRI KURRI SHEET 33 OF 43</b> Original Size <b>A3</b> Drawing No: <b>12529257-C1133</b>		Rev: <b>A</b>	
A CONCEPT ISSUE				B.S. K.R. P.Y. 19.06.20																			
No Revision Note: * indicates signatures on original issue of drawing or last revision of drawing				Drawn Job Manager Project Director Date																			





LONGITUDINAL SECTION - SHORTLAND TO KURRI KURRI

HORIZONTAL SCALE 1:2000  
VERTICAL SCALE 1:800

CONCEPT

																																																																																																																																																																																																																																																																																																																																																																																																																																																																																																																																																																																																																																																																																																																																																																																																																																																																																																																																																																																																																																																																																																																																																																																																																																																																																																																																																																																																																																																																																																																																																																																																																																												</
--	--	--	--	--	--	--	--	--	--	--	--	--	--	--	--	--	--	--	--	--	--	--	--	--	--	--	--	--	--	--	--	--	--	--	--	--	--	--	--	--	--	--	--	--	--	--	--	--	--	--	--	--	--	--	--	--	--	--	--	--	--	--	--	--	--	--	--	--	--	--	--	--	--	--	--	--	--	--	--	--	--	--	--	--	--	--	--	--	--	--	--	--	--	--	--	--	--	--	--	--	--	--	--	--	--	--	--	--	--	--	--	--	--	--	--	--	--	--	--	--	--	--	--	--	--	--	--	--	--	--	--	--	--	--	--	--	--	--	--	--	--	--	--	--	--	--	--	--	--	--	--	--	--	--	--	--	--	--	--	--	--	--	--	--	--	--	--	--	--	--	--	--	--	--	--	--	--	--	--	--	--	--	--	--	--	--	--	--	--	--	--	--	--	--	--	--	--	--	--	--	--	--	--	--	--	--	--	--	--	--	--	--	--	--	--	--	--	--	--	--	--	--	--	--	--	--	--	--	--	--	--	--	--	--	--	--	--	--	--	--	--	--	--	--	--	--	--	--	--	--	--	--	--	--	--	--	--	--	--	--	--	--	--	--	--	--	--	--	--	--	--	--	--	--	--	--	--	--	--	--	--	--	--	--	--	--	--	--	--	--	--	--	--	--	--	--	--	--	--	--	--	--	--	--	--	--	--	--	--	--	--	--	--	--	--	--	--	--	--	--	--	--	--	--	--	--	--	--	--	--	--	--	--	--	--	--	--	--	--	--	--	--	--	--	--	--	--	--	--	--	--	--	--	--	--	--	--	--	--	--	--	--	--	--	--	--	--	--	--	--	--	--	--	--	--	--	--	--	--	--	--	--	--	--	--	--	--	--	--	--	--	--	--	--	--	--	--	--	--	--	--	--	--	--	--	--	--	--	--	--	--	--	--	--	--	--	--	--	--	--	--	--	--	--	--	--	--	--	--	--	--	--	--	--	--	--	--	--	--	--	--	--	--	--	--	--	--	--	--	--	--	--	--	--	--	--	--	--	--	--	--	--	--	--	--	--	--	--	--	--	--	--	--	--	--	--	--	--	--	--	--	--	--	--	--	--	--	--	--	--	--	--	--	--	--	--	--	--	--	--	--	--	--	--	--	--	--	--	--	--	--	--	--	--	--	--	--	--	--	--	--	--	--	--	--	--	--	--	--	--	--	--	--	--	--	--	--	--	--	--	--	--	--	--	--	--	--	--	--	--	--	--	--	--	--	--	--	--	--	--	--	--	--	--	--	--	--	--	--	--	--	--	--	--	--	--	--	--	--	--	--	--	--	--	--	--	--	--	--	--	--	--	--	--	--	--	--	--	--	--	--	--	--	--	--	--	--	--	--	--	--	--	--	--	--	--	--	--	--	--	--	--	--	--	--	--	--	--	--	--	--	--	--	--	--	--	--	--	--	--	--	--	--	--	--	--	--	--	--	--	--	--	--	--	--	--	--	--	--	--	--	--	--	--	--	--	--	--	--	--	--	--	--	--	--	--	--	--	--	--	--	--	--	--	--	--	--	--	--	--	--	--	--	--	--	--	--	--	--	--	--	--	--	--	--	--	--	--	--	--	--	--	--	--	--	--	--	--	--	--	--	--	--	--	--	--	--	--	--	--	--	--	--	--	--	--	--	--	--	--	--	--	--	--	--	--	--	--	--	--	--	--	--	--	--	--	--	--	--	--	--	--	--	--	--	--	--	--	--	--	--	--	--	--	--	--	--	--	--	--	--	--	--	--	--	--	--	--	--	--	--	--	--	--	--	--	--	--	--	--	--	--	--	--	--	--	--	--	--	--	--	--	--	--	--	--	--	--	--	--	--	--	--	--	--	--	--	--	--	--	--	--	--	--	--	--	--	--	--	--	--	--	--	--	--	--	--	--	--	--	--	--	--	--	--	--	--	--	--	--	--	--	--	--	--	--	--	--	--	--	--	--	--	--	--	--	--	--	--	--	--	--	--	--	--	--	--	--	--	--	--	--	--	--	--	--	--	--	--	--	--	--	--	--	--	--	--	--	--	--	--	--	--	--	--	--	--	--	--	--	--	--	--	--	--	--	--	--	--	--	--	--	--	--	--	--	--	--	--	--	--	--	--	--	--	--	--	--	--	--	--	--	--	--	--	--	--	--	--	--	--	--	--	--	--	--	--	--	--	--	--	--	--	--	--	--	--	--	--	--	--	--	--	--	--	--	--	--	--	--	--	--	--	--	--	--	--	--	--	--	--	--	--	--	--	--	--	--	--	--	--	--	--	--	--	--	--	--	--	--	--	--	--	--	--	--	--	--	--	--	--	--	--	--	--	--	--	--	--	--	--	--	--	--	--	--	--	--	--	--	--	--	--	--	--	--	--	--	--	--	--	--	--	--	--	--	--	--	--	--	--	--	--	--	--	--	--	--	--	--	--	--	--	--	--	--	--	--	--	--	--	--	--	--	--	--	--	--	--	--	--	--	--	--	--	--	--	--	--	--	--	--	--	--	--	--	--	--	--	--	--	--	--	--	--	--	--	--	--	--	--	--	--	--	--	--	--	--	--	--	--	--	--	--	--	--	--	--	--	--	--	--	--	--	--	--	--	--	--	--	--	--	--	--	--	--	--	--	--	--	--	--	--	--	--	--	--	--	--	--	--	--	--	--	--	--	--	--	--	--	--	--	--	--	--	--	--	--	--	--	--	--	--	--	--	--	--	--	--	--	--	--	--	--	--	--	--	--	--	--	--	--	--	--	--	--	--	--	--	--	--	--	--	--	--	--	--	--	--	--	--	--	--	--	--	--	--	--	--	--	--	--	--	--	--	--	--	--	--	--	--	--	--	--	--	--	--	--	--	--	--	--	--	--	--	--	--	--	--	--	--	--	--	--	--	--	--	--	--	--	--	--	--	--	--	--	--	--	--	--	--	--	--	--	--	--	--	--	--	--	--	--	--	--	--	--	--	--	--	--	--	--	--	--	--	--	--	--	--	--	--	--	--	--	--	--	--	--	--	--	--	--	--	--	--	--	--	--	--	--	--	--	--	--	--	--	--	--	--	--	--	--	--	--	--	--	--	--	--	--	--	--	--	--	--	--	--	--	--	--	--	--	--	--	--	--	--	--	--	--	--	--	--	--	--	--	--	--	--	--	--	--	--	--	--	--	--	--	--	--	--	--	--	--	--	--	--	--	--	--	--	--	--	--	--	--	--	--	--	--	--	--	--	--	--	--	--	--	--	--	--	--	--	--	--	--	--	--	--	--	--	--	--	--	--	--	--	--	--	--	--	--	--	--	--	--	--	--	--	--	--	--	--	--	--	--	--	--	--	--	--	--	--	--	--	--	--	--	--	--	--	--	--	--	--	--	--	--	--	--	--	--	--	--	--	--	--	--	--	--	--	--	--	--	--	--	--	--	--	--	--	--	--	--	--	--	--	--	--	--	--	--	--	--	--	--	--	--	--	--	--	--	--	--	--	--	--	--	--	--	--	--	--	--	--	--	--	--	--	--	--	--	--	--	--	--	--	--	--	--	--	--	--	--	--	--	--	--	--	----











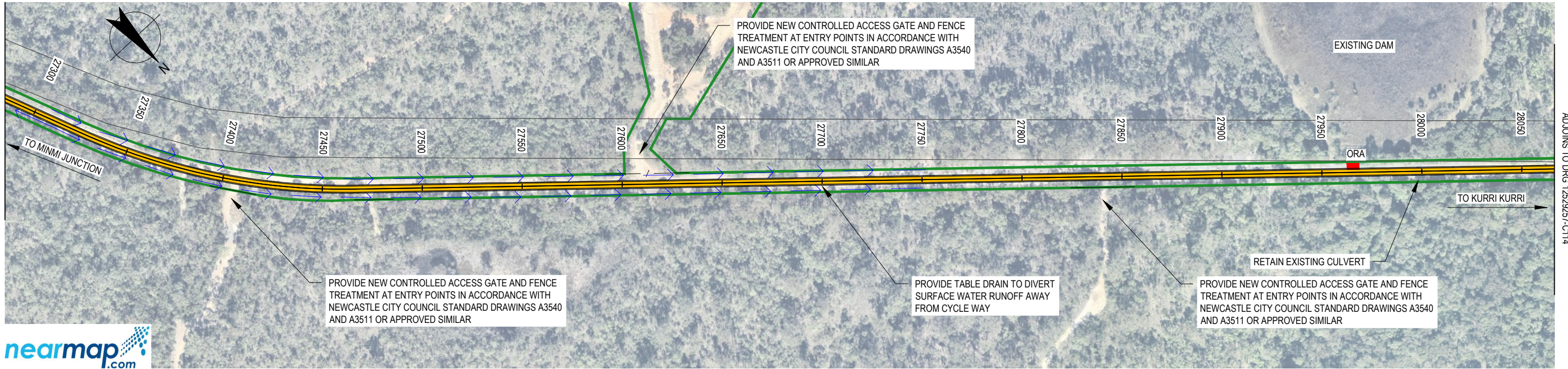








ADJOINS TO DRG 12529257-C112

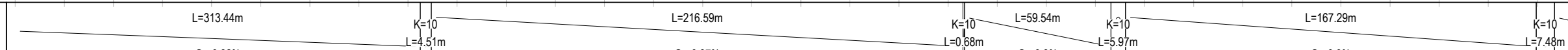
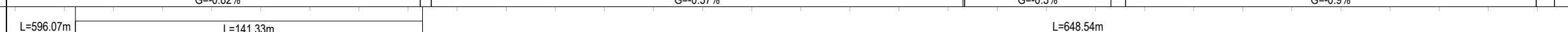


ADJOINS TO DRG 12529257-C114



PLAN  
SCALE 1:2000

DATUM RL. 10.00

VERTICAL ALIGNMENT																																				
HORIZONTAL ALIGNMENT																																				
LEVEL DIFFERENCE CUT - / FILL +	0.07	0.08	0.12	0.05	0.00	0.04	-0.00	0.01	0.01	0.02	0.02	0.03	-0.14	-0.20	-0.13	0.05	-0.07	0.01	0.09	0.05	0.30	0.08	-0.03	-0.02	0.04	0.05	0.01	0.06	0.06	0.08	0.02	0.02	-0.03	-0.07	-0.17	-0.03
DESIGN SURFACE LEVEL	30.080	29.915	29.751	29.586	29.421	29.256	29.092	28.927	28.762	28.655	28.581	28.506	28.432	28.357	28.283	28.208	28.134	28.059	27.985	27.910	27.845	27.784	27.723	27.598	27.418	27.238	27.057	26.877	26.697	26.517	26.336	26.156	26.101	26.070	26.039	26.168
EXISTING SURFACE LEVEL	30.01	29.83	29.63	29.53	29.42	29.21	29.10	28.92	28.75	28.64	28.56	28.48	28.57	28.55	28.42	28.16	28.21	28.05	27.89	27.86	27.54	27.70	27.75	27.62	27.37	27.18	27.05	26.82	26.64	26.44	26.31	26.14	26.13	26.14	26.21	26.20
CHAINAGE	27300.000	27320.000	27340.000	27360.000	27380.000	27400.000	27420.000	27440.000	27460.000	27480.000	27500.000	27520.000	27540.000	27560.000	27580.000	27600.000	27620.000	27640.000	27660.000	27680.000	27700.000	27720.000	27740.000	27760.000	27780.000	27800.000	27820.000	27840.000	27860.000	27880.000	27900.000	27920.000	27940.000	27960.000	27980.000	28000.000

LONGITUDINAL SECTION - SHORTLAND TO KURRI KURRI

HORIZONTAL SCALE 1:2000  
VERTICAL SCALE 1:800

CONCEPT

				<div><div><div>0204060m</div><div>SCALE 1:2000 AT ORIGINAL SIZE</div></div><div><div><div>081624m</div><div>SCALE 1:800 AT ORIGINAL SIZE</div></div><div><div>0204060m</div><div>HORIZONTAL SCALE 1:2000 AT ORIGINAL SIZE</div></div></div><div><div></div><div><div>GHD Tower, Level 3 24 Honeyuckle Drive, Newcastle NSW 2300 Australia PO Box 5403 Hunter Rgn Mail Cent, NSW 2310 T 61 2 4979 9999 F 61 2 4979 9988 E ntlmail@ghd.com W www.ghd.com</div></div></div></div>				<div><div>DO NOT SCALE</div><div>Conditions of Use. This document may only be used by GHD's client (and any other person who GHD has agreed can use this document) for the purpose for which it was prepared and must not be used by any other person or for any other purpose.</div></div>		<div>Drawn B. STANKEWYCZ</div>	<div>Designer L. SCHNEIDER</div>	<div>Client CESSNOCK CITY COUNCIL</div>
						<div>Drafting Check</div>	<div>Design Check K. ROWE</div>	<div>Project RICHMOND VALE RAIL TRAIL</div>				
						<div>Approved (Project Director)</div>	<div>Title SHORTLAND TO KURRI KURRI</div>	<div>Sheet SHEET 40 OF 43</div>				
A CONCEPT ISSUE				B.S. K.R. P.Y. 19.06.20		<div>Date</div>	<div>Scale AS SHOWN</div>	<div>This Drawing must not be used for Construction unless signed as Approved</div>	<div>Original Size A3</div>	<div>Drawing No: 12529257-C1139</div>	<div>Rev: A</div>	
No	Revision	Note: * indicates signatures on original issue of drawing or last revision of drawing	Drawn	Job Manager	Project Director	Date						

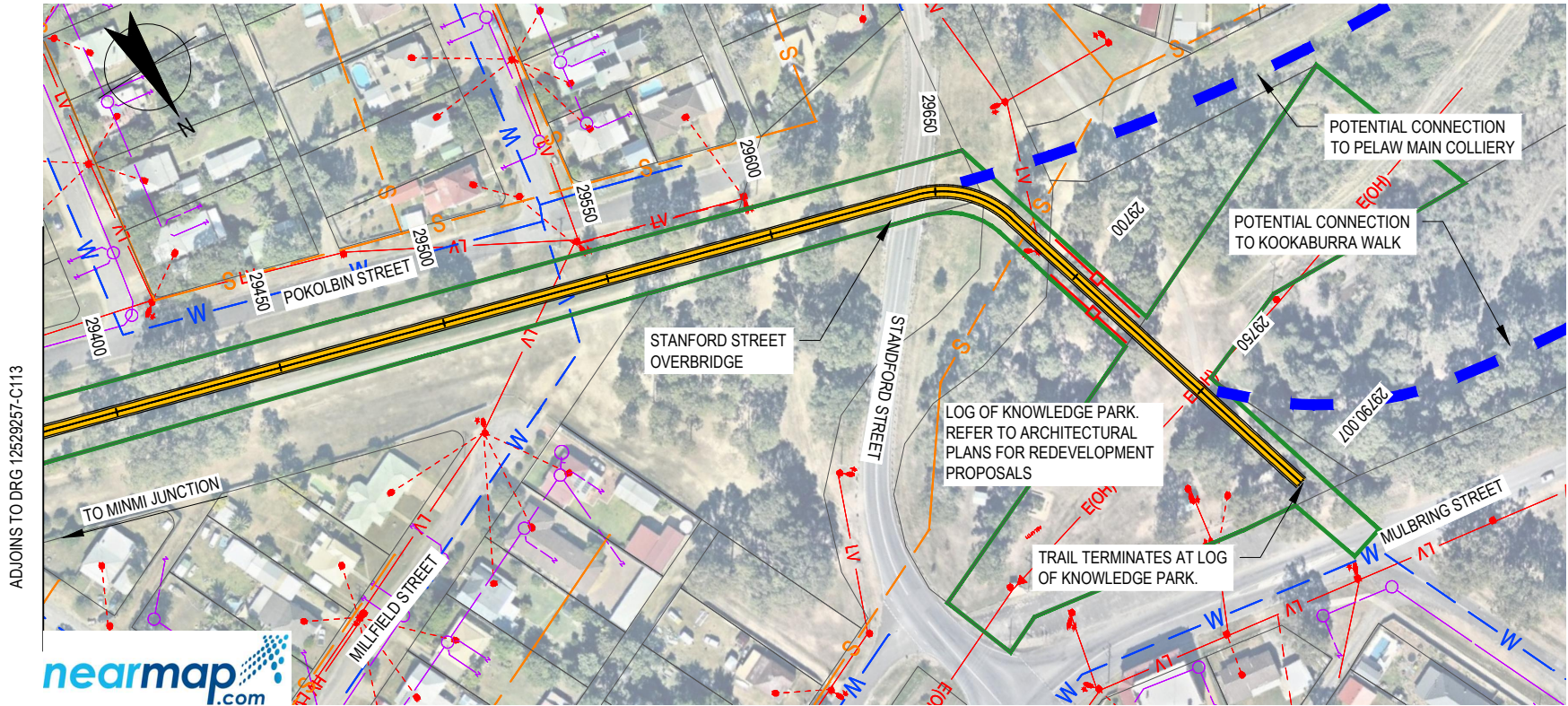




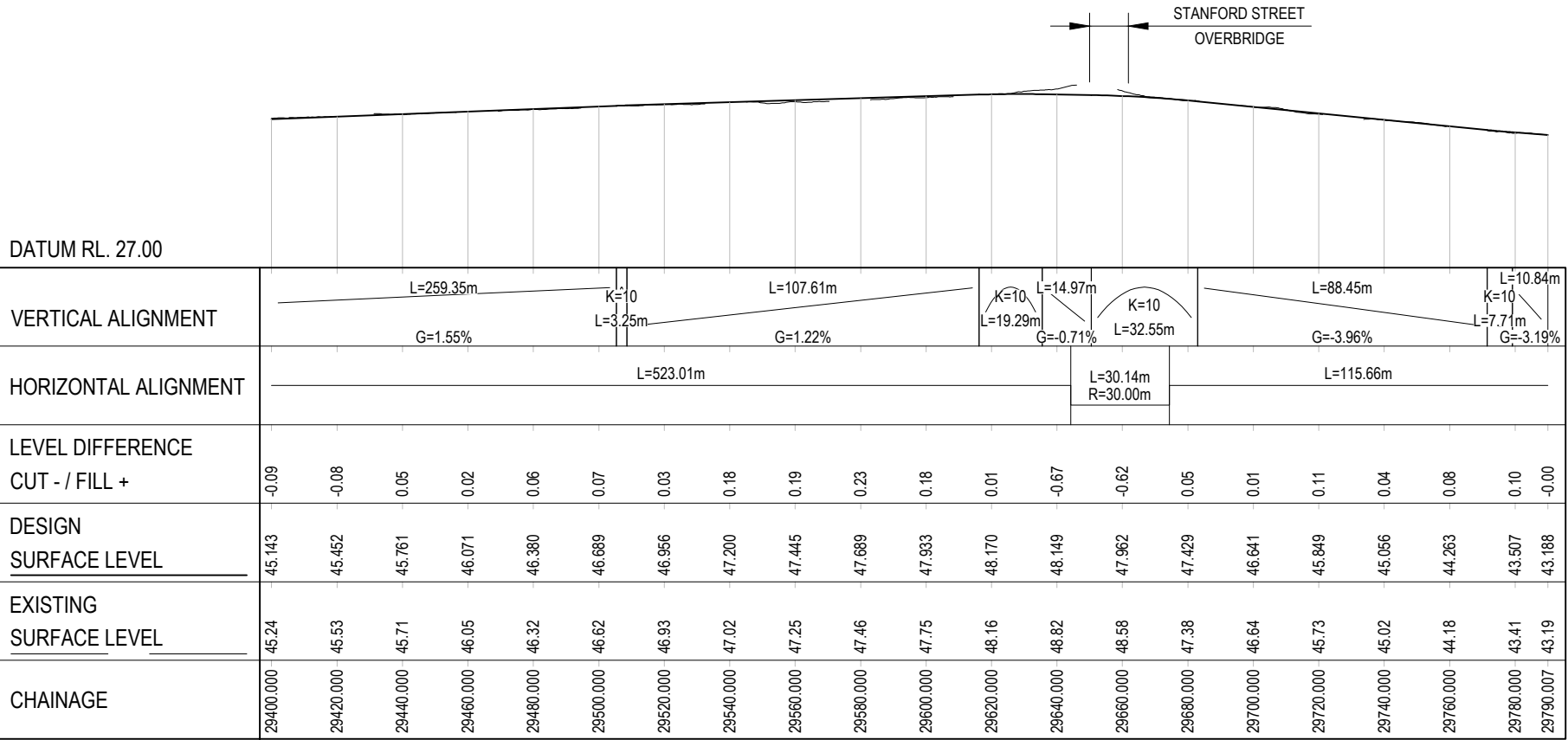








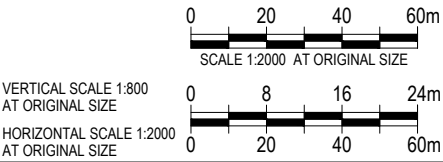
PLAN  
SCALE 1:2000



LONGITUDINAL SECTION - SHORTLAND TO KURRI KURRI  
HORIZONTAL SCALE 1:2000  
VERTICAL SCALE 1:800

CONCEPT

A	CONCEPT ISSUE	B.S	K.R	P.Y	19.06.20
No	Revision	Note: * indicates signatures on original issue of drawing or last revision of drawing	Drawn	Job Manager	Project Director



DO NOT SCALE

Conditions of Use.  
This document may only be used by GHD's client (and any other person who GHD has agreed can use this document) for the purpose for which it was prepared and must not be used by any other person or for any other purpose.

Drawn	B. STANKEWYCZ	Designer	L. SCHNEIDER
Drafting Check		Design Check	K. ROWE
Approved (Project Director)		Date	
Scale	AS SHOWN	This Drawing must not be used for Construction unless signed as Approved	

Client  
Project  
Title

CESSNOCK CITY COUNCIL  
RICHMOND VALE RAIL TRAIL  
SHORTLAND TO KURRI KURRI  
SHEET 43 OF 43

Original Size  
A3  
Drawing No: 12529257-C1142

Rev: A