

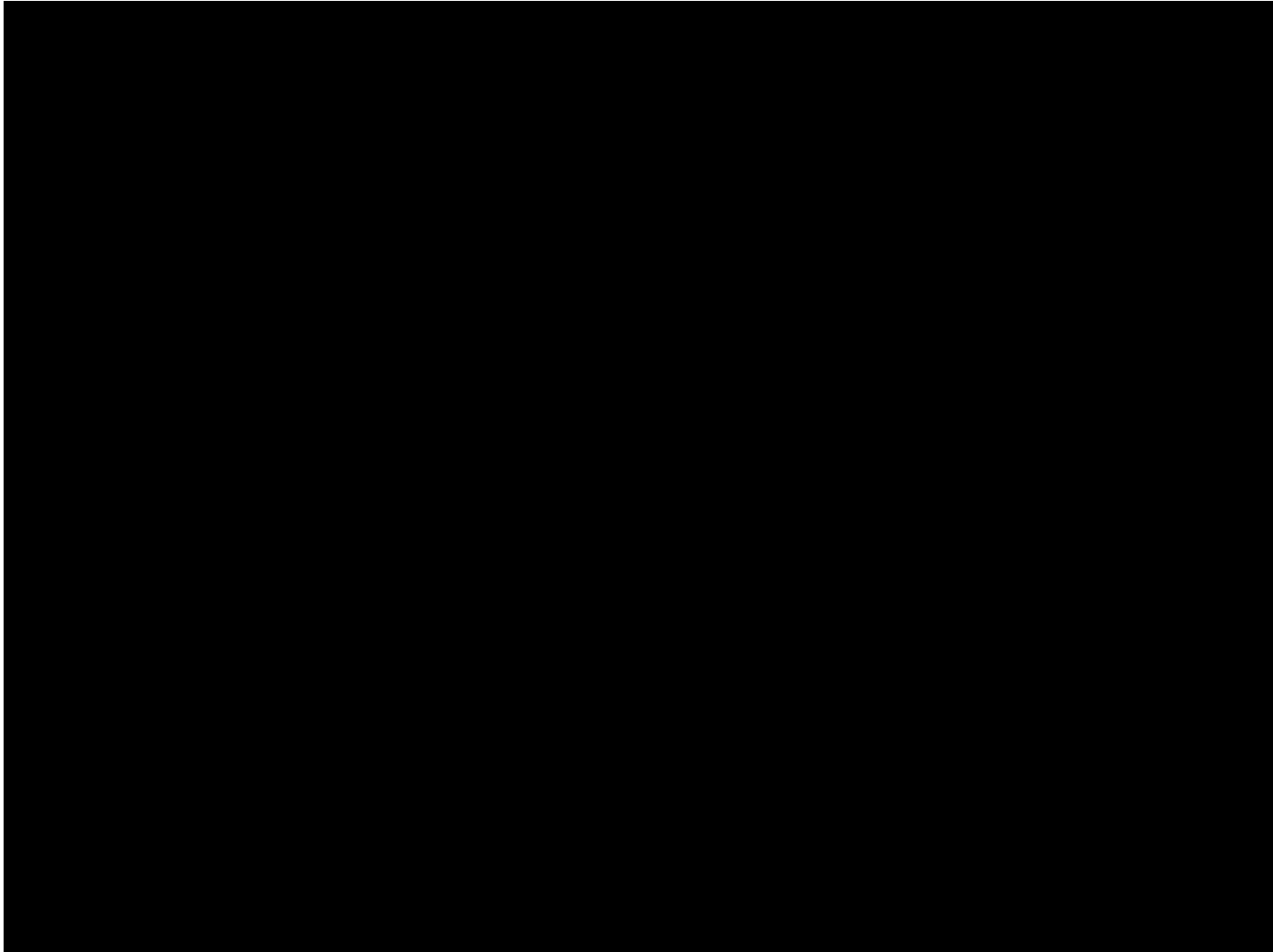


Richmond Vale Rail Trail Project Status

27th September 2017

Document prepared by
Geoff Wickens

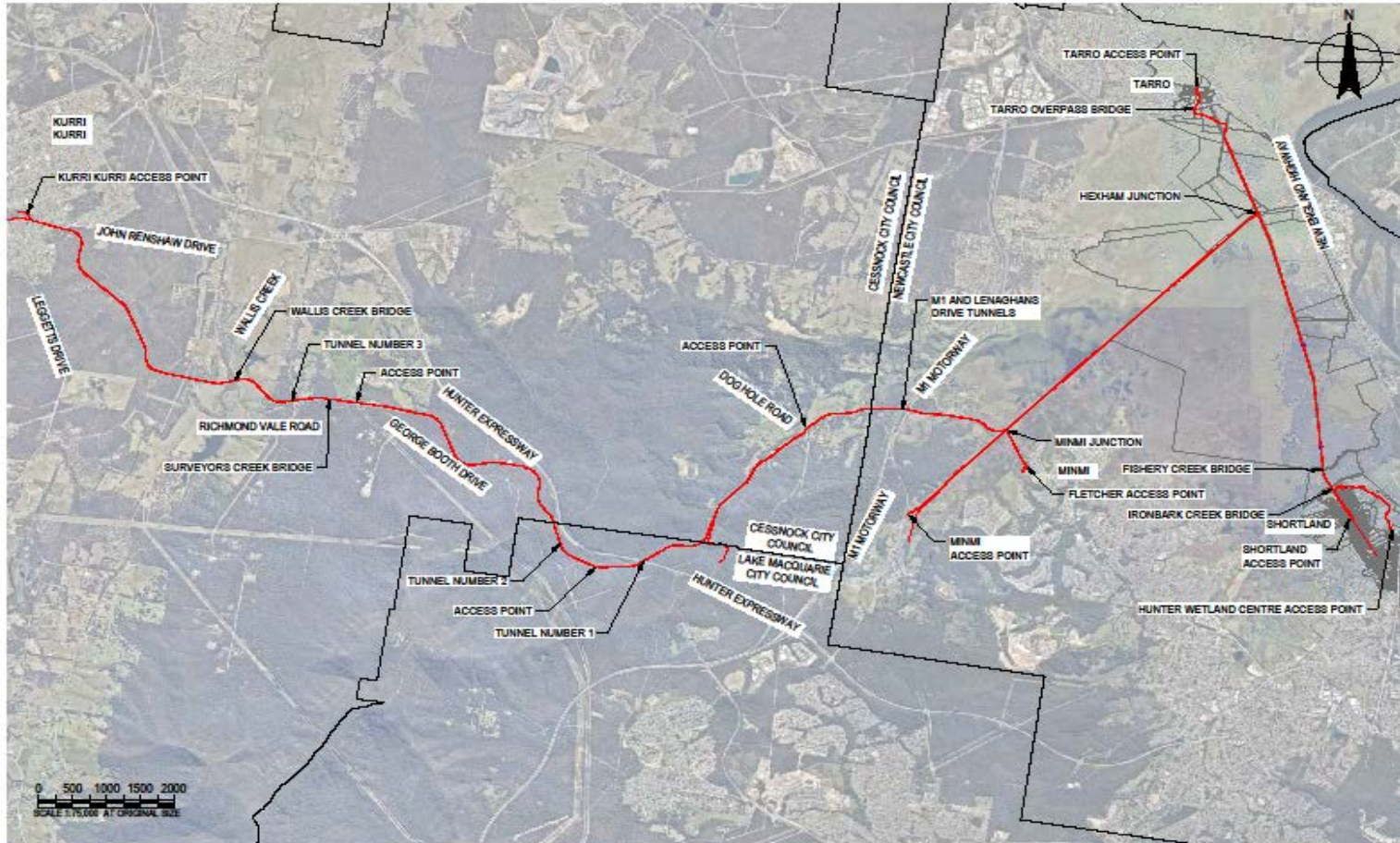
Richmond Vale Rail Trail



Project Staging

- Newcastle City Council have been managing the Project on behalf of Newcastle, Lake Macquarie and Cessnock Councils
- To progress the design and the relevant environmental approvals the project has been divided into two sections, Shortland to Tarro and Hexham to Kurri Kurri. The staging of each Section is slightly different.
- Section 1: Shortland to Tarro, Detailed Design and EIS
 - Nearing completion of the detailed design and preparation of the Environmental Impact Statement (EIS) supported by the required environmental investigations.
- Section 2: Hexham to Kurri Kurri, Concept Design and REF
 - The concept design is nearing completion.
- There is a significant overlap between the documentation for the REF and the EIS, as with the EIS the field work, investigations and report writing for the Environmental Impact Study has largely been completed and is currently being reviewed. NCC expects to release these documents for public exhibition in late 2017.

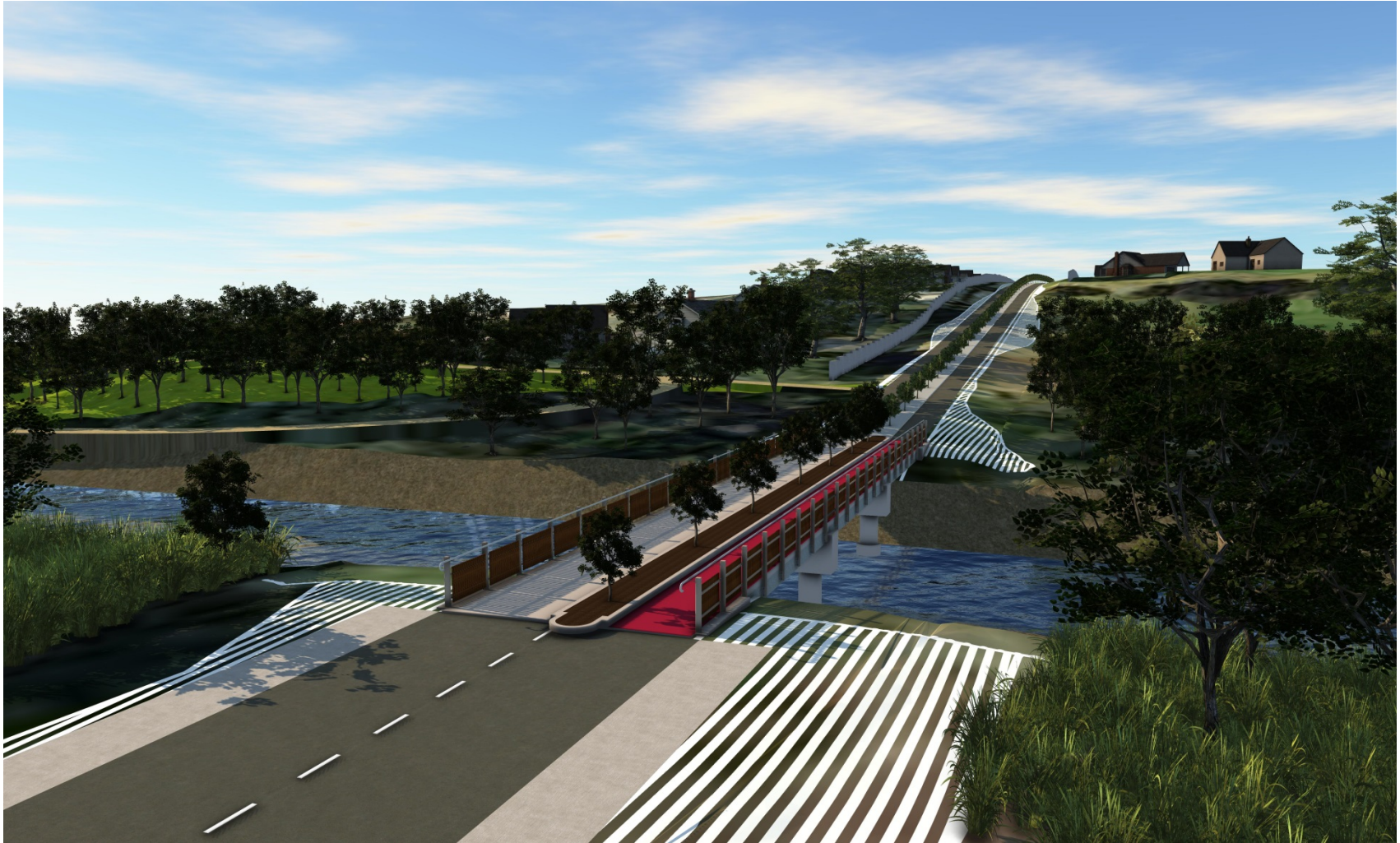
Project Area



Challenges Overcome

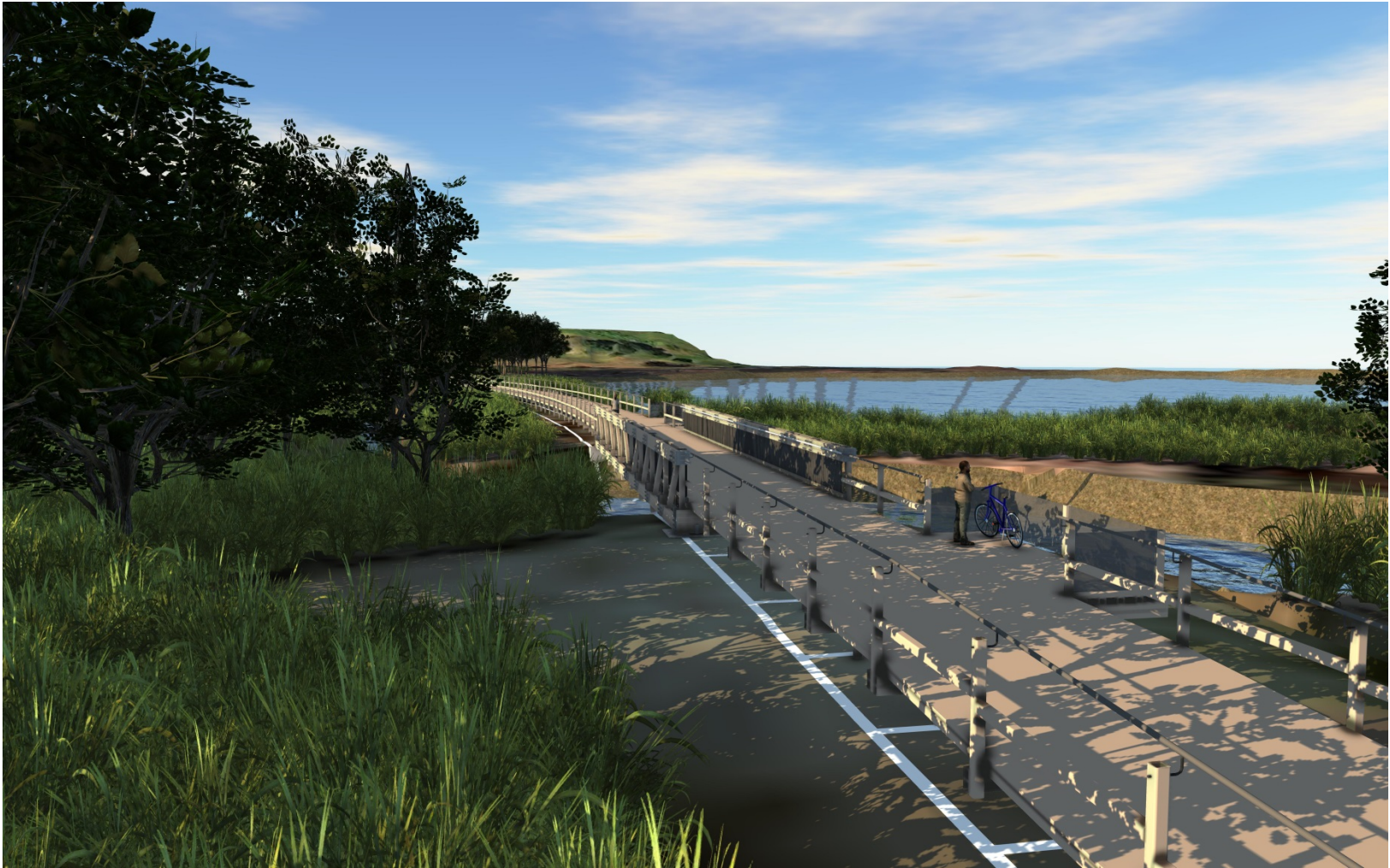
- Crossing Ironbark and Fishery Creek
 - soft soils
 - 5t construction access limit
- Universal Access at Shortland
 - good design outcome
- Resolution of Wallis Creek and Surveyors Creek Bridges
- Microbat Habitat within tunnels

Ironbark Creek Bridge

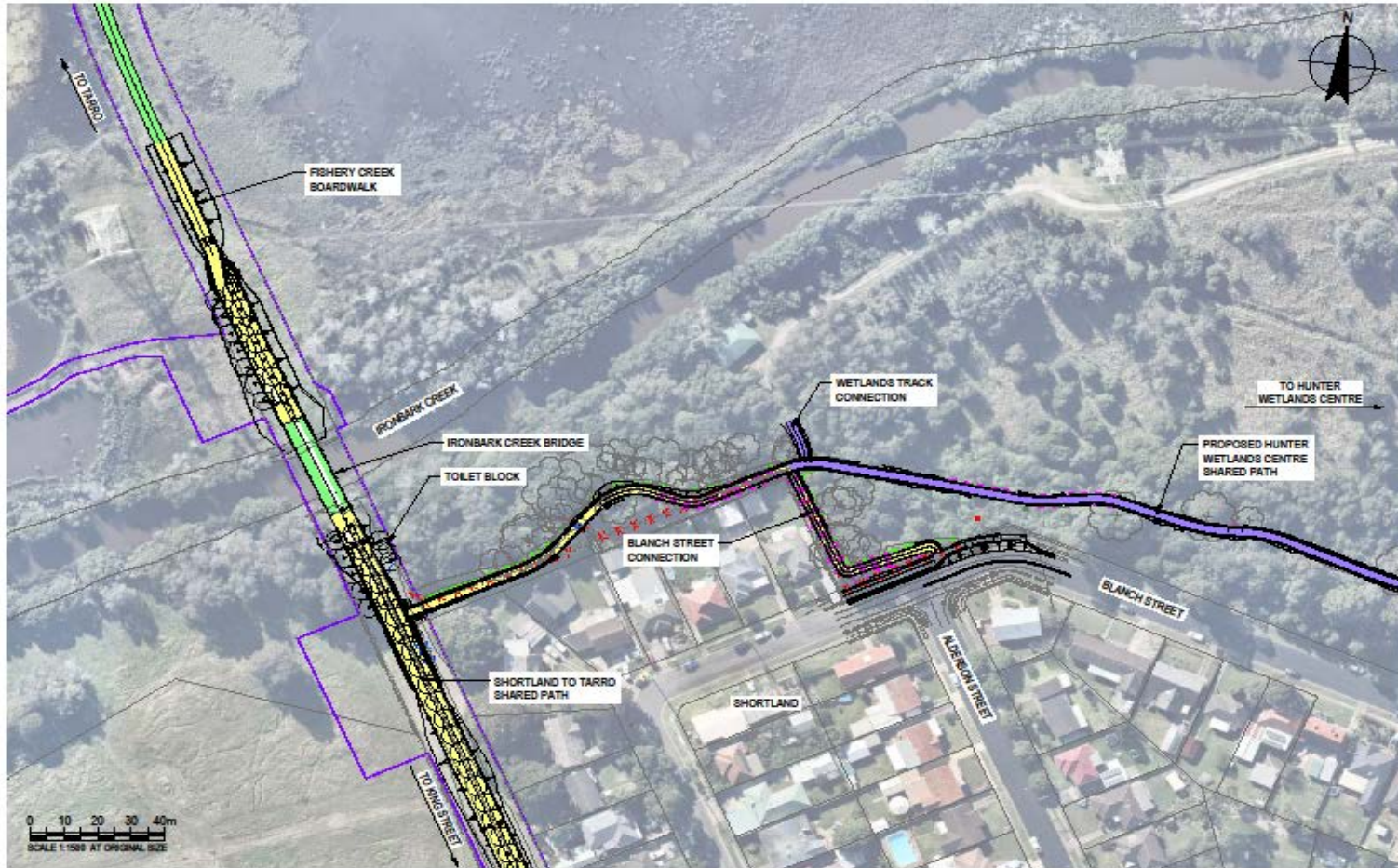


Fishery Creek Design

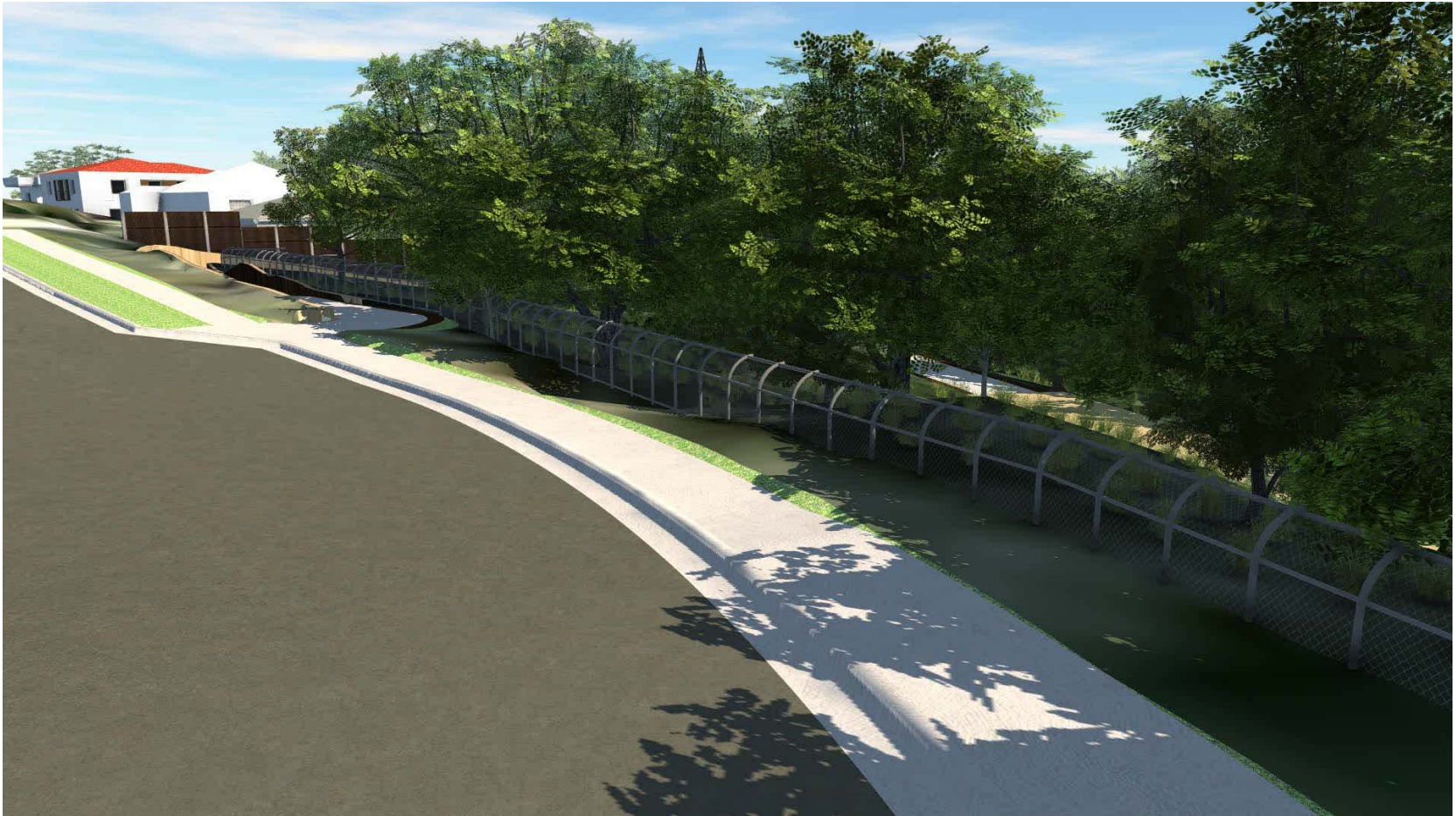
Fishery Creek Bridge



Universal Access at Shortland



Universal Access at Shortland



Wallis Creek Bridge



Wallis Creek Bridge



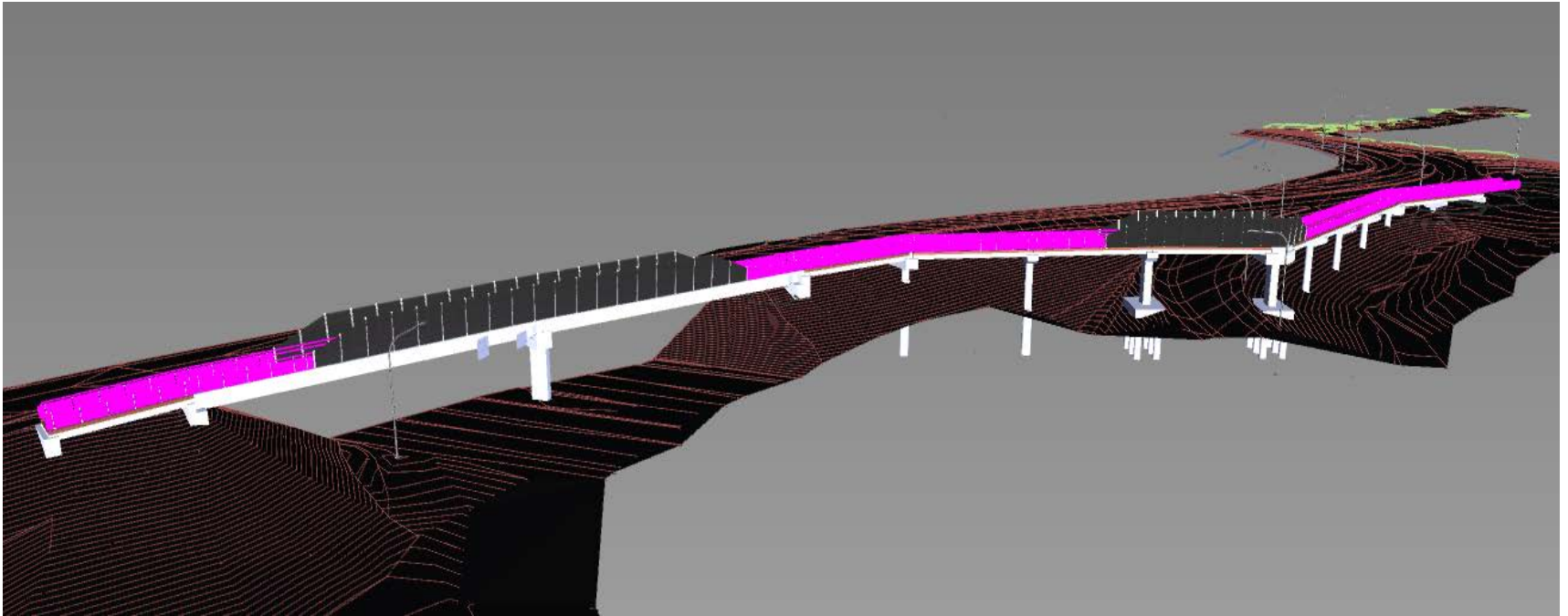
Challenges to Overcome

- Crossing the New England Highway
- Co-existence with the Wetland Ecosystem
- Co-existence with existing Wetland Users
- Stage 2 Detailed Design
- Access Point at Dog Hole Rd
- Funding

Existing Bridge at Tarro



Tarro Bridge



Major Documentation

Nearing Completion

Stage 1: Detailed Design

Stage 2: Concept Design

Socio Economic Assessment

Biodiversity Report

Air and Noise Report

Visual Assessment

Water Assessment

Heritage Reports

Where to from here

Complete Stage 1 Detailed Design

Complete Stage 2 Concept Design

Engage and inform the stakeholders

Commence Stage 2 Detailed Design

Exhibit the EIS

Secure the funding

Construction

Future Possibilities and Connections

